



PROJECT NEEDS



More lighting
for increased safety



Enhanced aesthetics:
trees, benches and
new bus stops



Updated and
consolidated access



Update aging water
main and infrastructure

PHASE 1 PROJECT TIMELINE

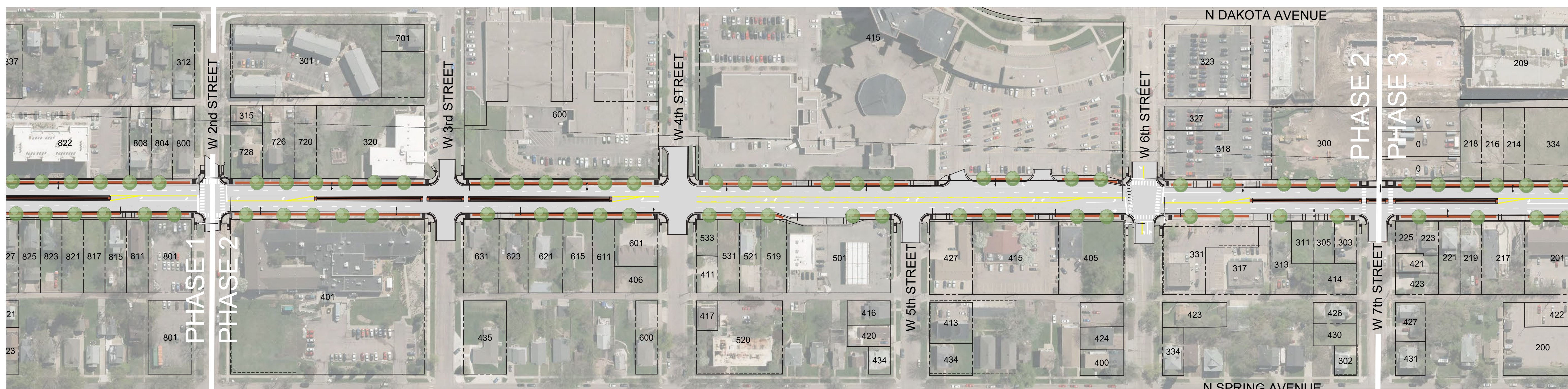
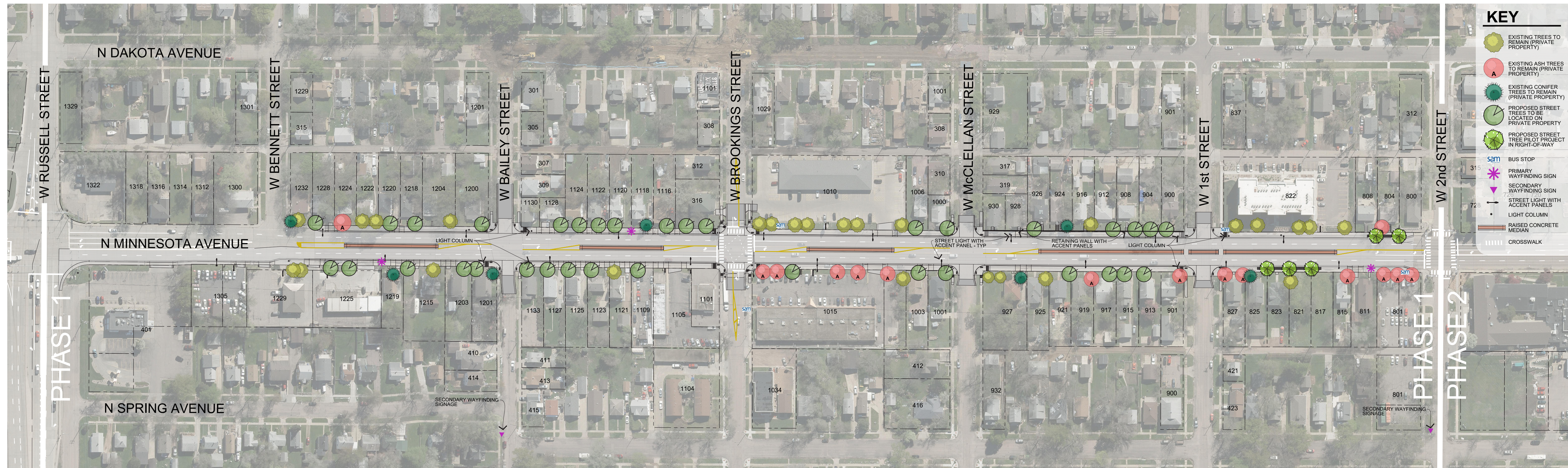


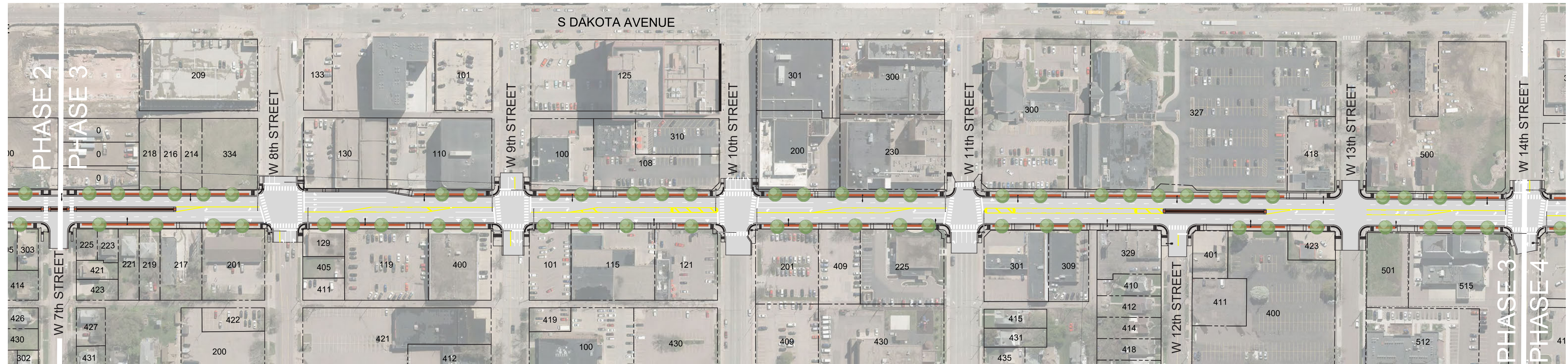
Project Design
2021



Construction Begins
2022

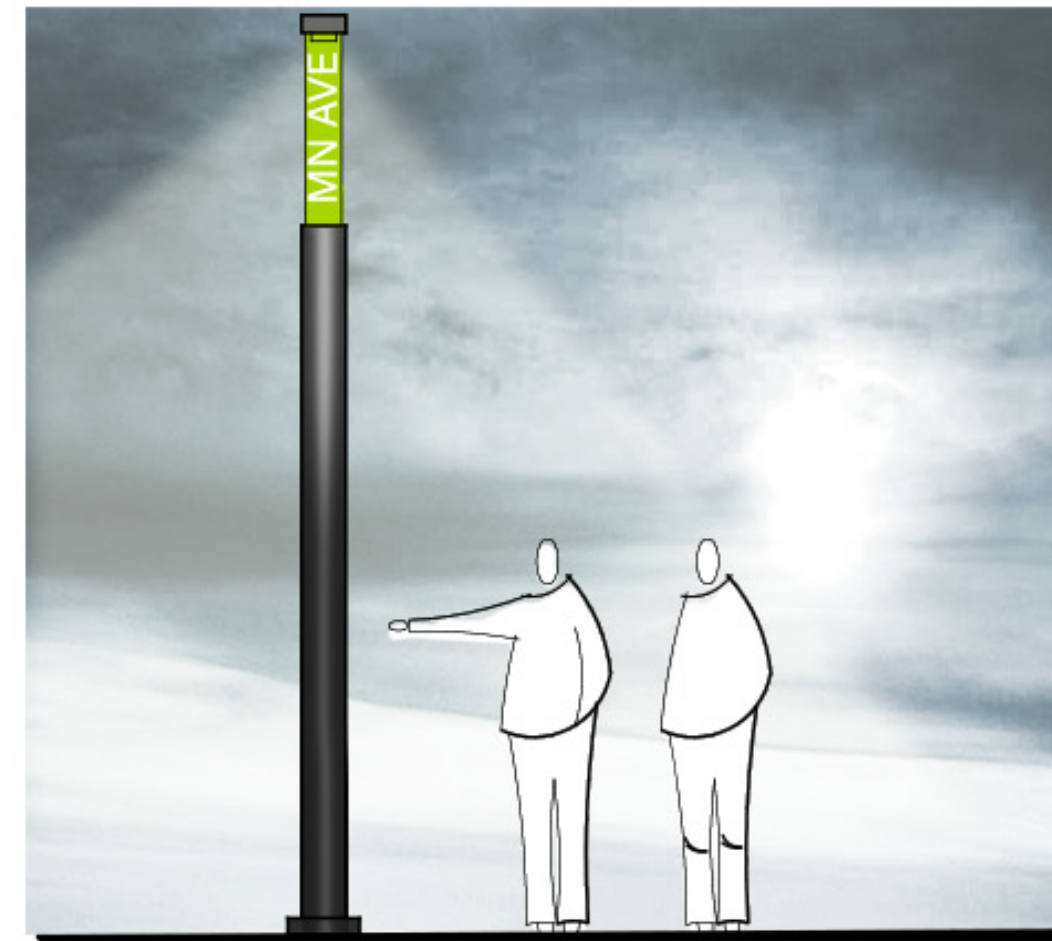
MINNESOTA AVENUE IMPROVEMENTS



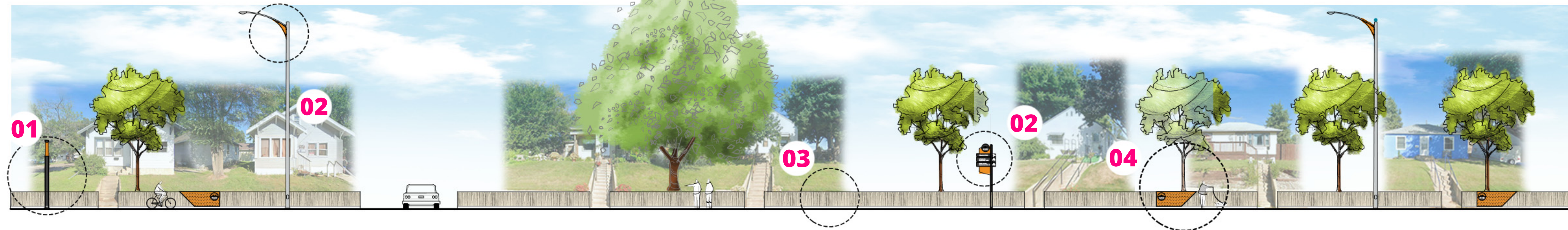
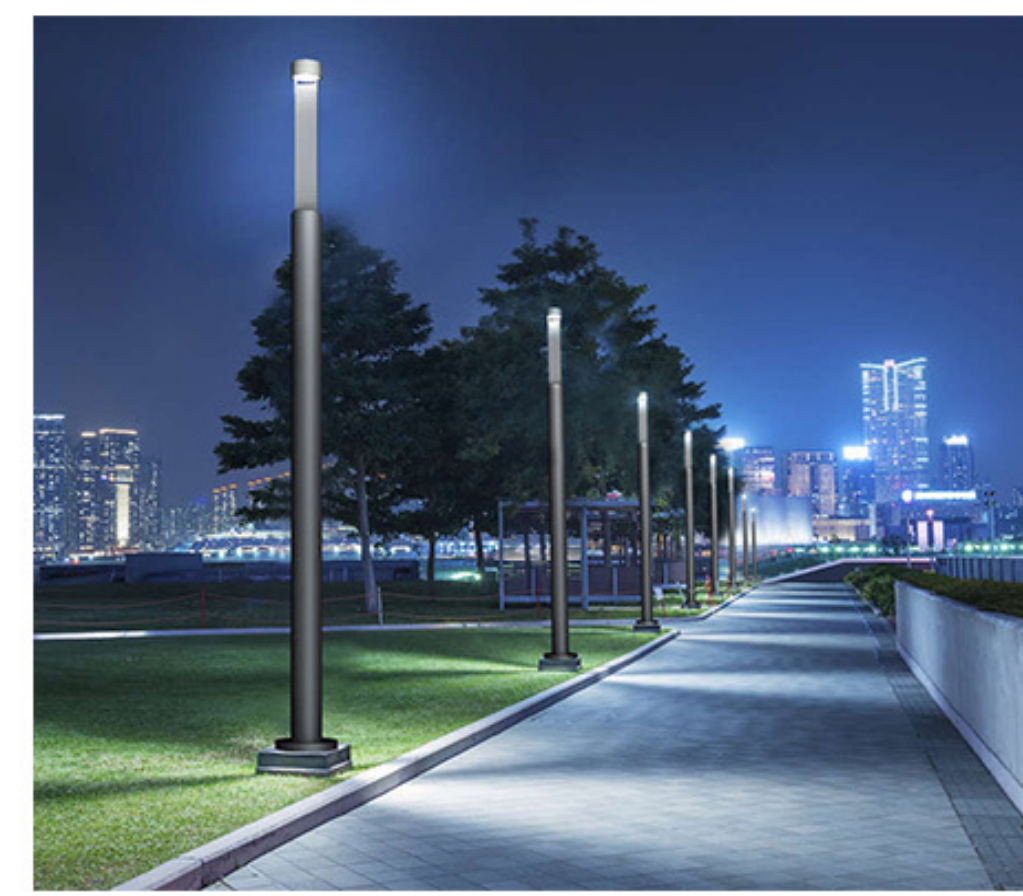




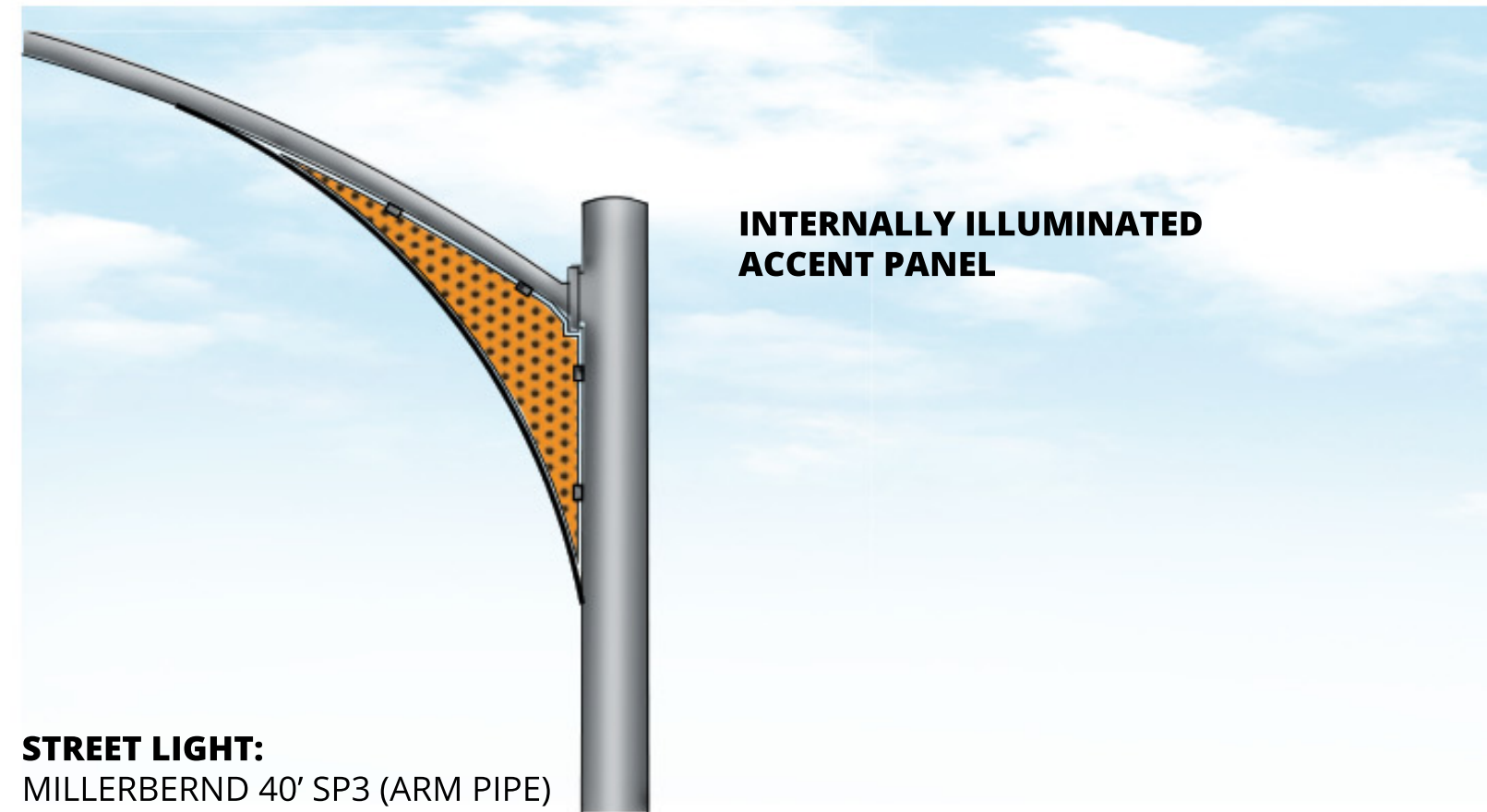
01 | LIGHT COLUMN + CORRIDOR BRANDING



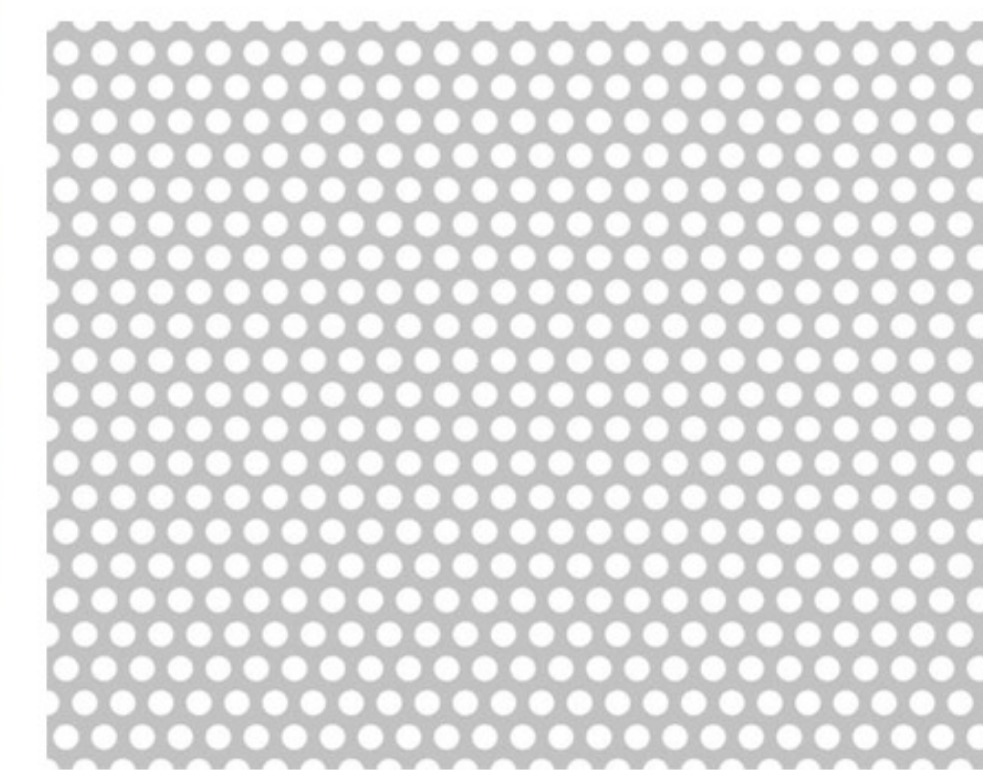
RIALTA RW404CC | LIGHT COLUMN



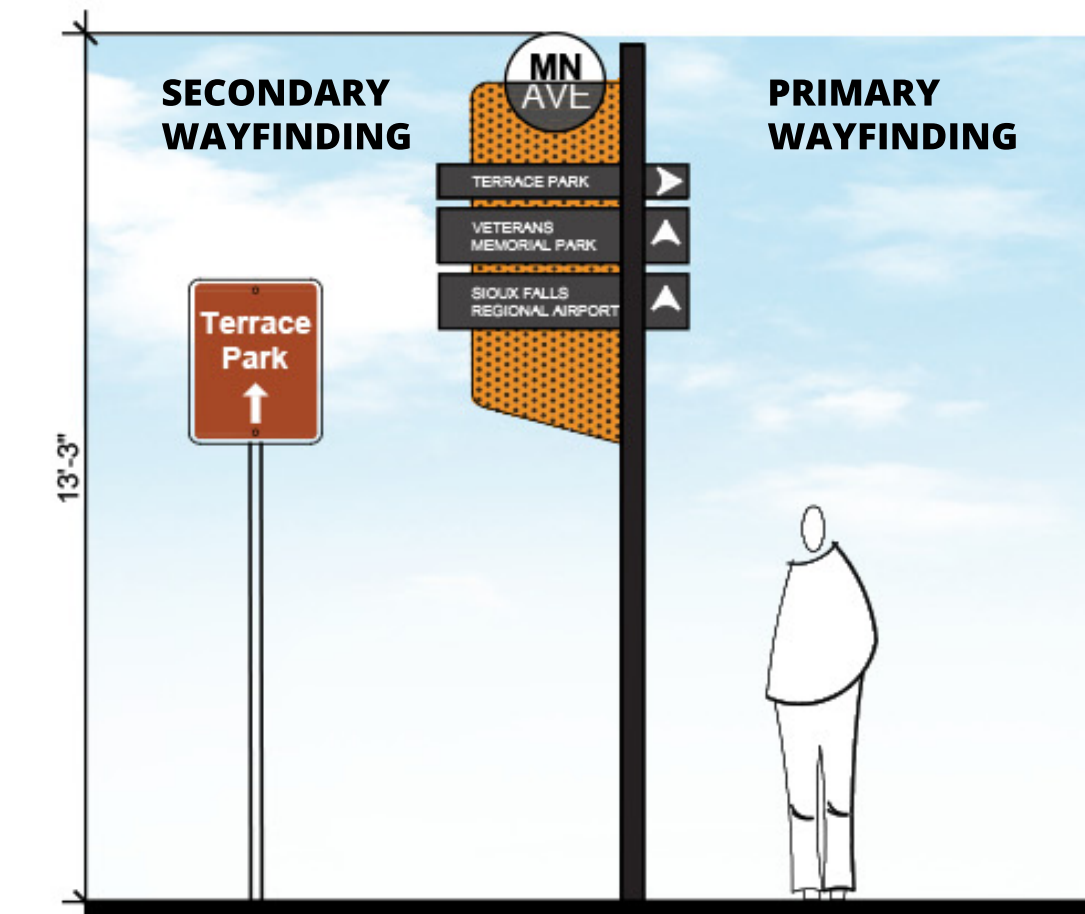
02 | WAYFINDING + CORRIDOR BRANDING



FONT TYPE: ACUMIN PRO
FONT HEIGHT: 2.5" (50-75' LEGIBLE VIEWING DISTANCE)



COLOR THEME:



WAYFINDING

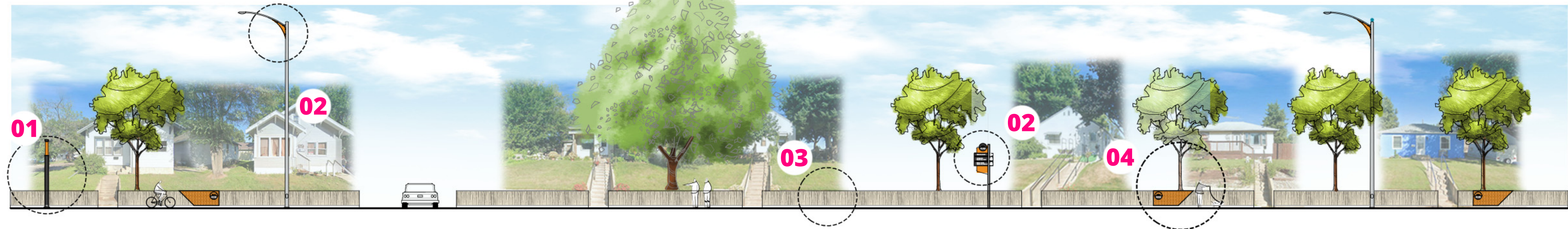
03 | Lighting and Wayfinding Signage North Minnesota Avenue Reconstruction

Sioux Falls, South Dakota | 18248

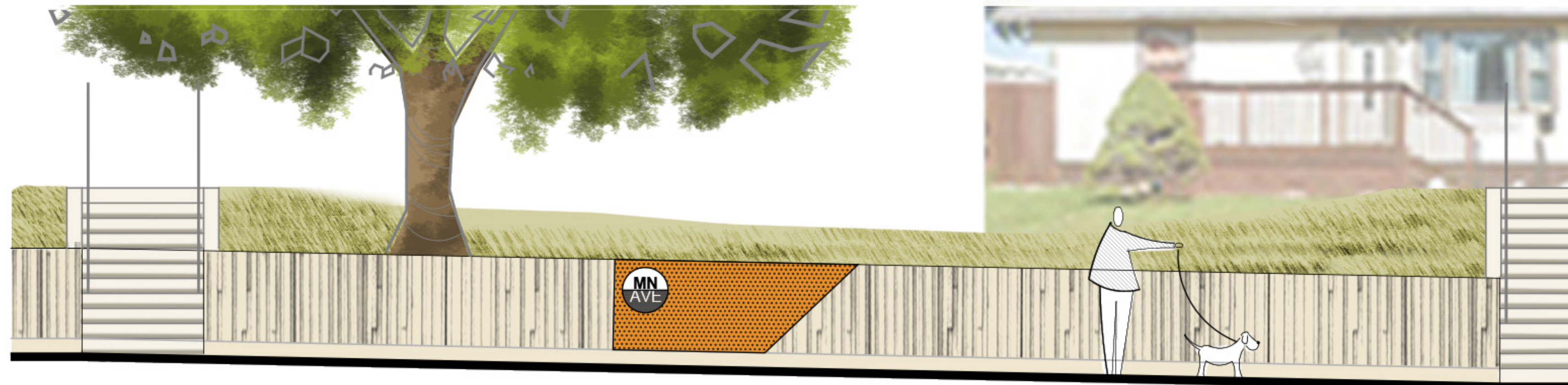
03 | WALL DESIGN



FITZGERALD FORMLINERS | 16938 RANDOM PLANK



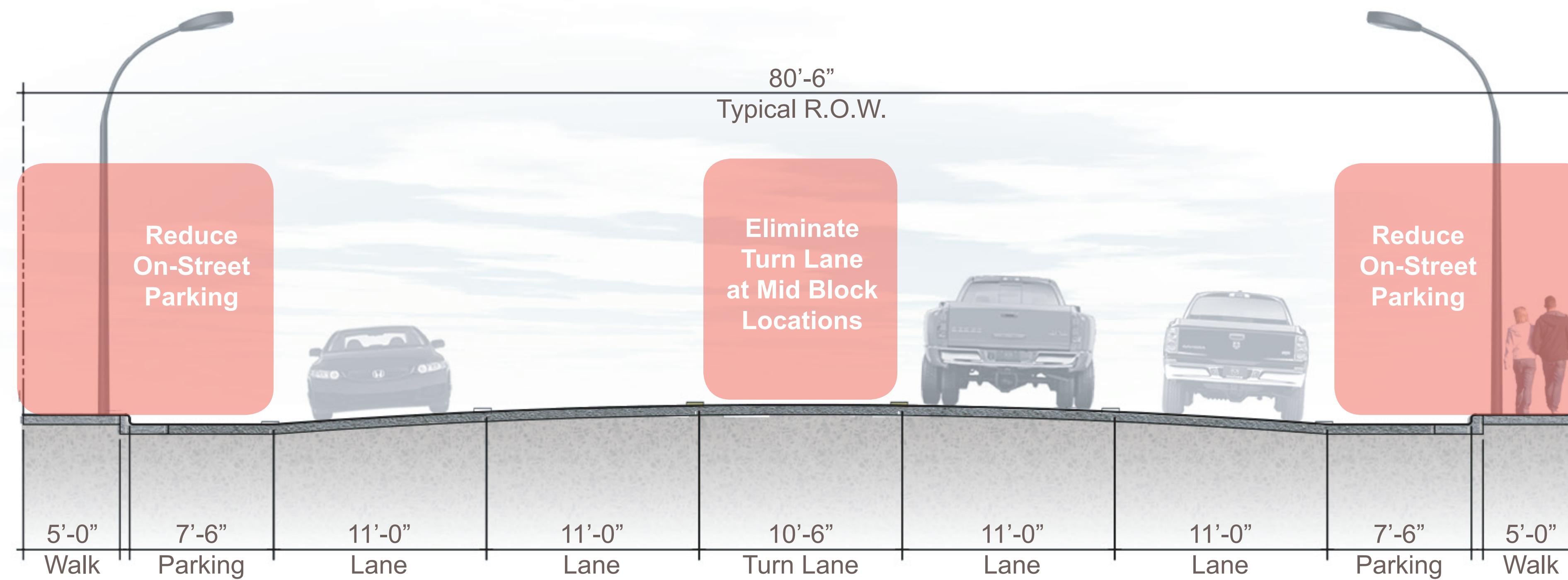
04 | WALL ACCENTS



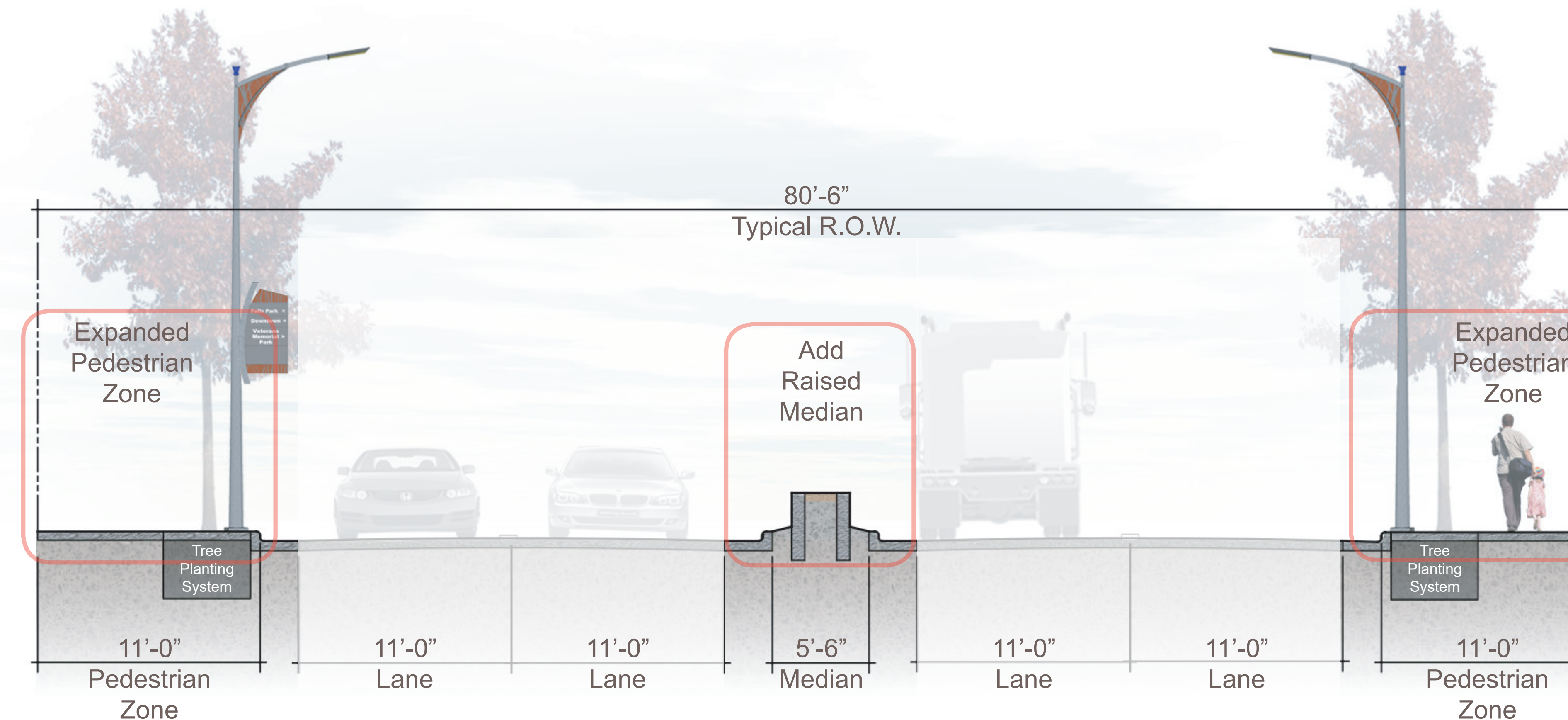
02 | Wall Design and Accents
North Minnesota Avenue Reconstruction

Sioux Falls, South Dakota | 18248

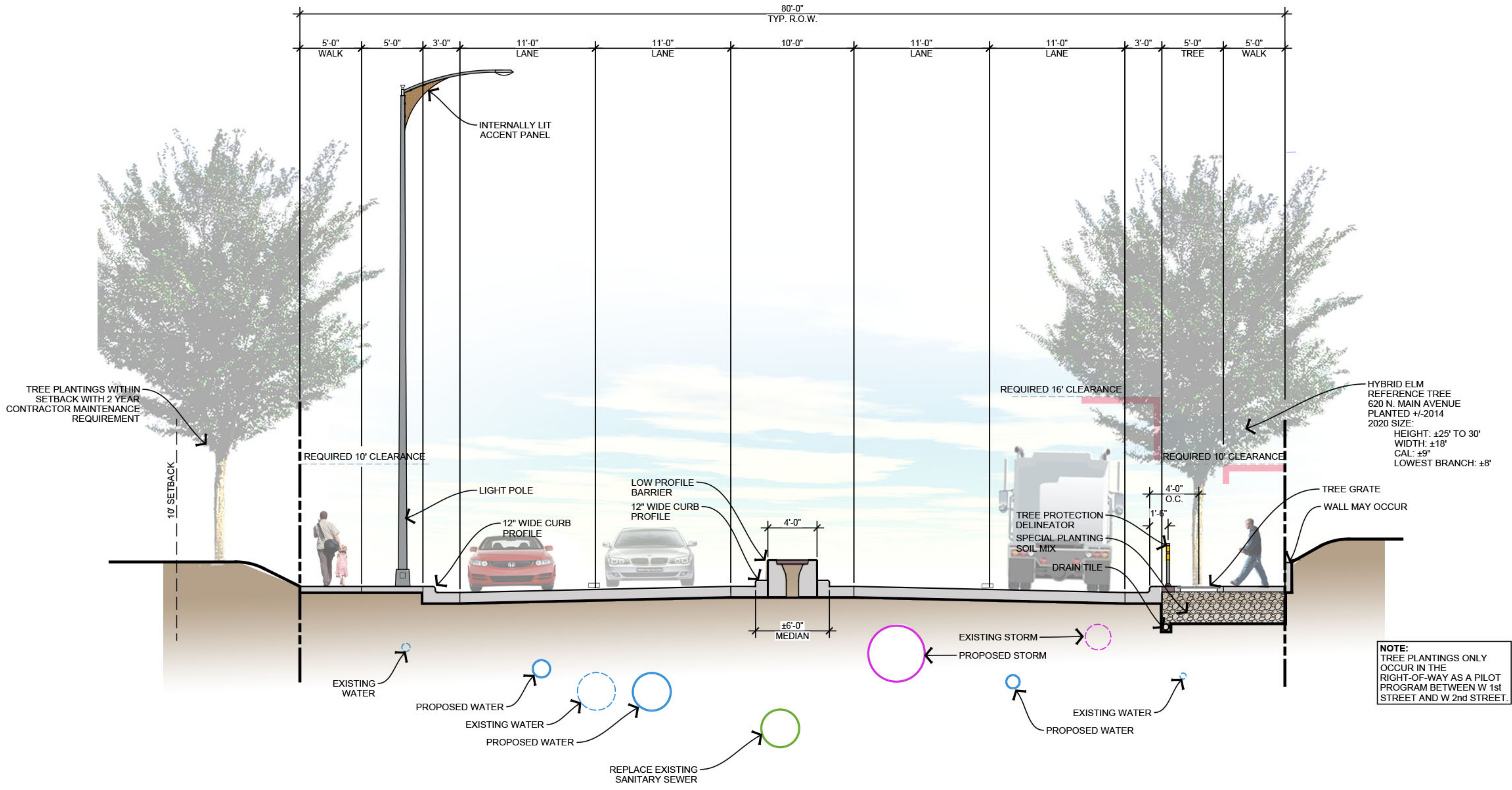
CONFLUENCE HDR
March 16, 2021



EXISTING ROAD SECTION



PROPOSED ROAD SECTION - PRELIMINARY DESIGN



PHASE 1 ROAD SECTION - PRELIMINARY DESIGN