



GOAL:
Determine the need for Redwood Blvd to connect to SD100.

ISSUES:
The floodplain and potential Six Mile Road interchange alignment cause potential conflicts in maintaining continuity of Redwood Blvd from Brandon to Sioux Falls.

GOAL:
Determine future traffic needs at major Brandon intersections.

ISSUES:
Continued growth will likely create need for more lanes and updated traffic control.

GOAL:
Identify the need and implement a plan to connect Six Mile Road to I-90 to provide additional access to the growing communities of Brandon and Sioux Falls.

ISSUES:
The floodplain, WAPA and costs associated with this proposal will all impact a decision to construct a future interchange at this location.

GOAL:
Further examine and outline the need for the Benson Road extension and build upon work previously completed under the direction of the City of Sioux Falls.

ISSUES:
Proposed railyard, floodplain, and Rice Street elevated connection are all issues that need to be addressed.

GOAL:
Plan collector street system to serve developing properties.

ISSUES:
Collector streets must be coordinated with SD100 and other planned arterials. Collectors must also be coordinated with existing rural residential development.

GOAL:
Provide an east/west route choice by extending Russell Street to Rice Street and improve the Chambers Street alignment to provide east/west continuity without cutting through the center of the City Maintenance Dept. land.

ISSUES:
The Big Sioux River, John Morralls, Sioux Falls Stockyard, BNSF, terrain, and aesthetic concerns relating to Falls Park all are significant issues when examining options for the Russell to Cliff connection.

GOAL:
Provide east/west continuity between SD100 and Rice Street to provide relief to the Madison Street and 10th Street corridors.

ISSUES:
Right-of-way, terrain, Great Bear Slid Resort, BNSF and Big Sioux River are significant hurdles to overcome to make connection.

GOAL:
Provide facilities for pedestrian and bicycle mobility.

ISSUES:
Implementing previous planning efforts and making sure that other system changes serve pedestrians and bicyclists.

GOAL:
Establish a collector/arterial system that provides for north/south connectivity between Six Mile Road and the Big Sioux River.

ISSUES:
Rural residential developments in this area will be problematic when making route choices. Terrain in this area is not ideal for design speeds associated with arterial and collector roadways.

GOAL:
Identify solutions to reduce congestion along the 10th Street corridor from downtown east through I-229 and beyond.

ISSUES:
Right-of-way and access to local businesses along 10th Street will complicate the conventional thought process of adding additional lanes to increase capacity. In the past, transit and other modes of transportation besides passenger cars has been underutilized and viewed as unrealistic due to the short commute times most Sioux Falls citizens experience. Adjacent east/west corridors to 10th Street are located in rural settings which creates concerns among landowners when traffic diversion techniques are discussed.

GOAL:
The SD100 corridor will serve as a high speed regional arterial roadway through the center of this study. Corridor preservation techniques have been implemented by the City of Sioux Falls and SDDOT to acquire or preserve right-of-way.

ISSUES:
Although the SD100 corridor has been studied and accepted by most of the landowners that the corridor impacts, education of the need for the corridor will be critical during this study.

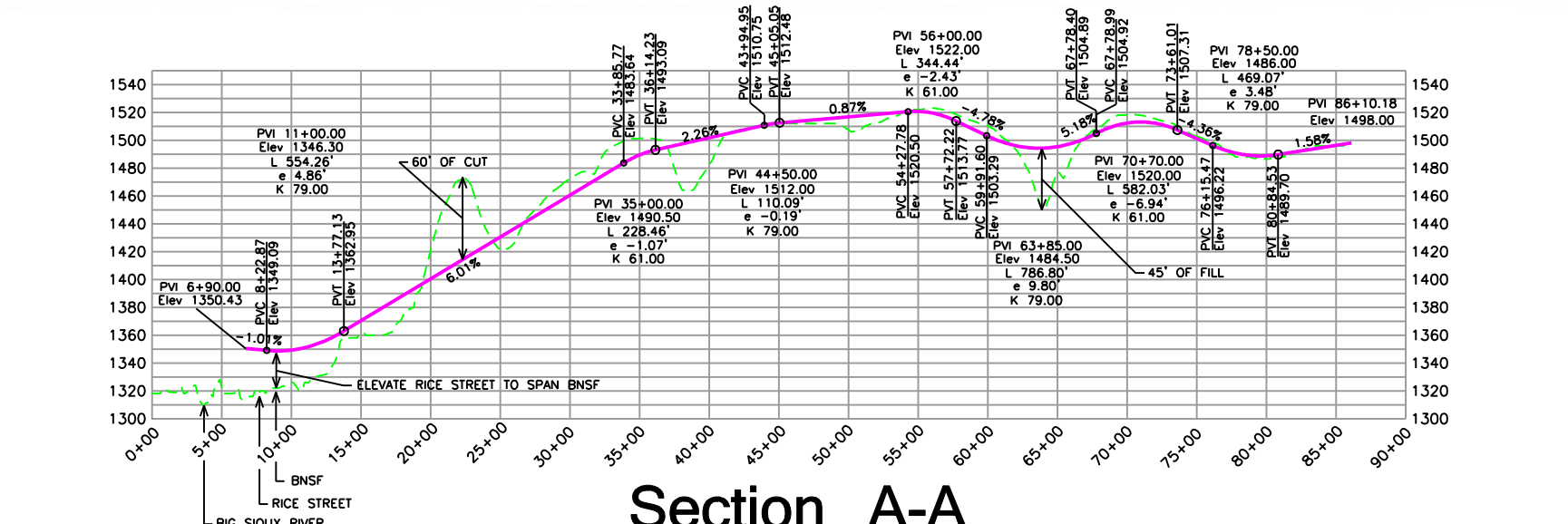


Figure 2 - Issues Map

Legend

- ★ School Location
- Arterial Road Study Alignment
- Collector Road Study Alignment
- Proposed Bike Path
- Existing Bike Path
- ▨ Floodplain

SCALE IN FEET
0 625 1250