

Cost \$18.7 Million
Benefit Cost 6.26

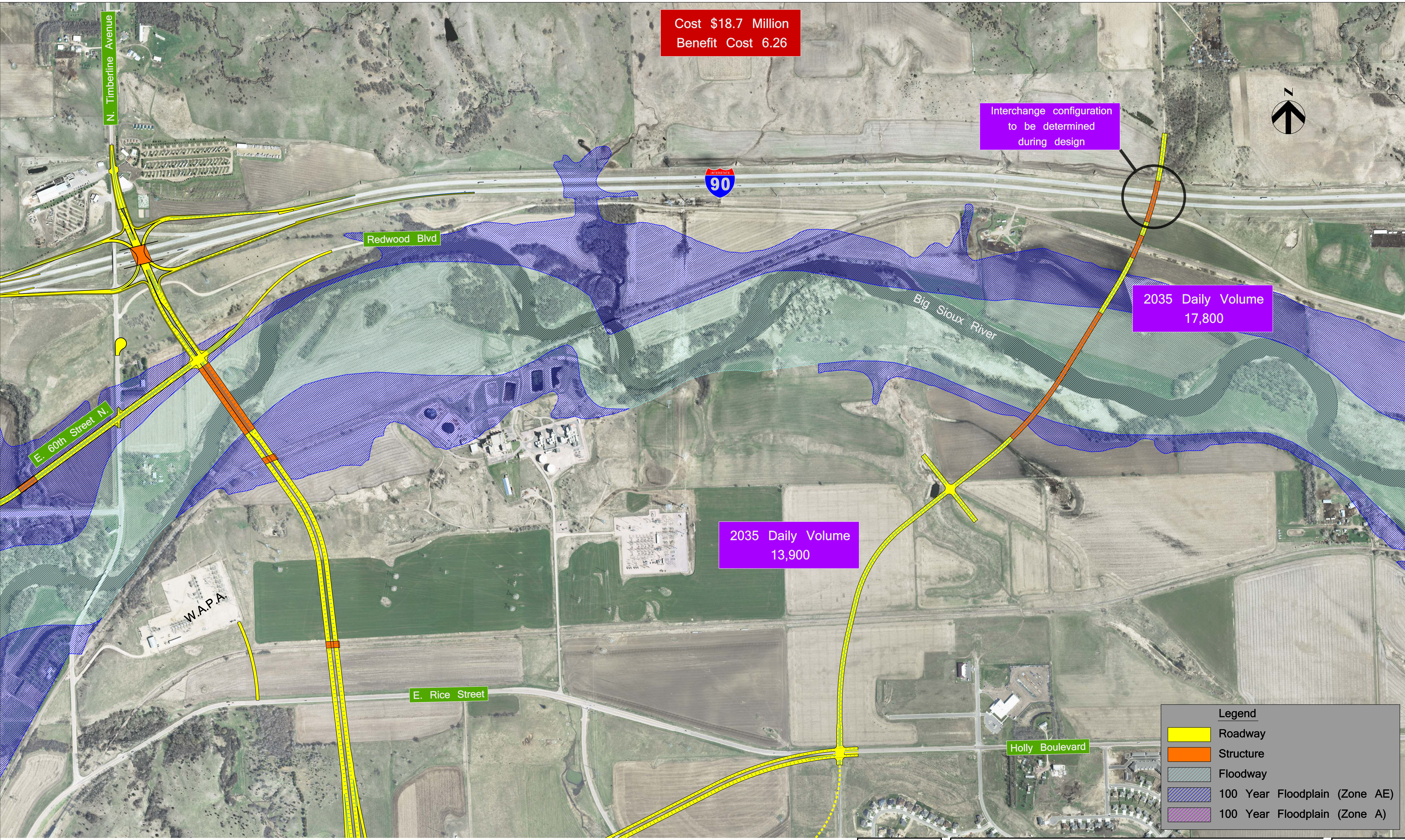
Interchange configuration
to be determined
during design

2035 Daily Volume
17,800

2035 Daily Volume
13,900

Legend

- Roadway
- Structure
- Floodway
- 100 Year Floodplain (Zone AE)
- 100 Year Floodplain (Zone A)



City of Sioux Falls
Northeast Transportation Study
Six Mile Road and I-90 Connection

DATE
Oct 2009
FIGURE
3-11