

ANNUAL REPORT

2021



Explore! Connect! Play!

THIS PAGE INTENTIONALLY LEFT BLANK

Dear Citizens of Sioux Falls,

This year was a pleasant return to near normalcy following the pandemic that negatively impacted so many aspects of parks & recreation services last year.

There was a lot of progress on park development and associated public/private partnerships this year highlighted with an incredible gift from Dianne and Garry Jacobson to construct Jacobson Plaza at Falls Park. Garry and Dianne agreed to provide 50% of the funding to build the city's first refrigerated ice ribbon and inclusive playground in the park system. They also committed to partner with the city to build out the entire master plan for the plaza in the future. What's more, they also established a replacement fund at the Sioux Falls Area Community Foundation that can be used to replace plaza improvements over time as needed. What an incredible gift from the Jacobson's that is going to provide great joy to all that use this destination park space.

Speaking of firsts, we conducted our first ever design competition for Falls Park to generate big ideas and create a grand vision for the parks' development for many years. While it was the first time we used this process, it certainly won't be the last. The value we received from this process was more than we could have hoped and it has our city team talking about using the same process as a source for design inspiration on other projects! The design team of Confluence won the competition and will be working on the master plan through 2022.

A new chair lift at Great Bear was a great addition to the ski area replacing the original chair lift that lasted 40 plus years. Many people raved about the new lift and how it improved their experience.

Another public/private partnership was formed by working with Leadership Sioux Falls, Promising Futures, and the Sioux Falls School District to fund, design and create a new master plan for Hayward Park. A new splash pad, playground and dog park are going to be welcome additions to this area of town where access to water-based recreation is a challenge.

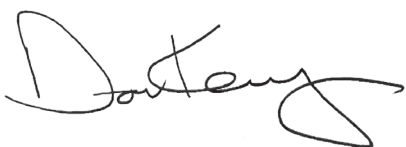
We also teamed up with the Sioux Falls Tennis Association to build a new 12-court tennis complex in Tomar Park. This will be the city's first 12 court complex and will serve as a great tournament complex as well as supporting league play, tennis instruction and general recreational use. This was a grassroots effort to take a two court complex and turn it into a showplace.

Work also continued on the federal permitting process for Phase III of the Downtown River Greenway adjacent to the Steel District redevelopment. This \$15 million dollar investment to build Phase III and replace the low head dam will leverage \$200 million in private redevelopment at the former Sioux Steel site.

To close, we completed the paving of the first phase of the Cherry Creek trail from Legacy Park to Family Park, giving west side residents better access to the main trail loop with a neighborhood connection to Songbird Street.

Next year is going to be another very active year and I can't wait to see how it all unfolds!

Happy Trails!



Don Kearney, Director of Parks & Recreation

The Sioux Falls Parks and Recreation Board is a seven-member board. Each member is appointed for a five-year term and is eligible for reappointment to a second consecutive five-year term. Members are appointed by the Mayor with the advice and consent of the City Council. Officers are elected from the board and include the president, vice president, and secretary. Regular meetings are held on the third Wednesday of each month, with a quorum of four board members being necessary for a meeting. Members shall not hold any elective office in the government of the city.

Duties include initiating, reviewing, and making recommendations for ordinances, policies, and rules governing the use of the city's public parks, swimming pools, and other facilities, including the golf courses.

2021 Mayor and Council Members

Mayor Paul TenHaken

Janet Brekke

Christine M. Erickson

Alex Jensen

Rick Kiley

Greg Neitzert

Marshall Selberg

Curt Soehl

Pat Starr

Parks and Recreation Board *as of year end 2021*

Jim Stavenger President

Ann Nachtigal Vice President

Mike Begeman Secretary

Rick Weber

Mick Conlin

Brooke Wegener

Teresa Cauwels

Parks and Recreation Administration

Don Kearney Director

Kelby Mieras Park Operations Manager

Jackie Nelson Parks & Recreation Administrative Manager/
Interim Recreation Manager

Tory Miedema Park Development Specialist

Mike Patten Park Development Specialist

Parks and Recreation Mission Statement

To enhance the quality of life by providing safe and enjoyable experiences through people, programs, places, and partnerships.

Parks and Recreation Vision Statement

To provide a comprehensive mix of high-quality parks and recreation programs, facilities, and services that contribute to a quality of life that is unparalleled in the region.

Core Values

Sioux Falls Parks and Recreation is committed to this set of Core Values. These are our highest priorities, deeply held beliefs, and core fundamental driving forces. Adopting these values guides us in sustaining a thriving parks and recreation system for our community.

- **Collaboration**—We believe in cultivating partnerships to maximize the quality of the parks and recreation system.
- **Resilience**—We accomplish our goals by developing a resilient, committed workforce that can adapt and thrive.
- **Engagement**—We promote a culture of interactive participation and authentic, respectful communication.
- **Excellence**—We are passionate about the delivery of exceptional experiences in every aspect of our work to fulfill our mission and vision.
- **Continuous Improvement**—We focus on innovation to continuously improve our programs, facilities and services.



Nationally Accredited Parks and Recreation Agency

CAPRA accreditation is a distinguished mark of excellence for park and recreation agencies and is a measure of an agency's overall quality of operation, management, and service to the community. The National Recreation and Park Association research team estimates that there are approximately 14,000 parks and recreation agencies nationwide, of which 1 percent, or 192, have earned national accreditation. Sioux Falls Parks and Recreation is proud to be one of these elite agencies since 2010.

Director's Message i

Officials ii

Overview 1

Recreation Division 2

 Cultural Arts 2

 Aquatics 3-4

 Athletics 5

 Outdoor Ice Rinks 6

 Community Centers/Enlarged Gyms 7

Special Events 8

Volunteers 8

Greenway Recreation Trail 9

Park System 10-11

Park Operations 12

Partnerships 13-14

 Sioux Falls Golf 13

 Great Plains Zoo & Delbridge Museum 13

 Great Bear Recreation Park 14

 Falls Overlook Café 14

 Levitt at the Falls 14

Administration 15-16

Organizational Chart 17

Park System Map 18-19

THIS PAGE INTENTIONALLY LEFT BLANK

Parks and Recreation Statistics	2017	2018	2019	2020	2021
Park Land Acres	3,190.5	3,349.3	3,346	3,373.6	3,392.13
Parks and Recreation Full-Time Employees	75	77	76	78	78
Operating Annual Budget	\$18,108,812.15	\$17,989,803	\$19,539,085	\$20,159,065	\$20,634,480
Capital Improvement Annual Budget	\$3,962,450	\$6,819,800	\$6,039,800	\$5,281,500	\$5,708,500
City Limits Area (Square Miles)	78.21	78.94	79.81	80.12	81.38
Population Estimate	183,200	187,200	190,750	195,850	202,600

Developed Parks	2019	2020	2021
Regional Park	11	11	11
Community Park	14	14	15
Neighborhood Park	27	27	26
Nature Park	5	5	5
Plaza Park	5	5	5
Greenway Park	4	4	4
School Parks	14	14	15
Total Parks	80	80	81

Other Sites	2019	2020	2021
Undeveloped Park Site	13	13	13
Support Site	3	3	3
Golf Course	3	3	3
Community Center	5	5	5
Enlarged Gym	3	3	3
Total Other	27	27	27

Acres by Type	2019	2020	2021
Developed Acres	2,633.2	2,633.2	2,644.14
Undeveloped Acres	183.5	211.1	218.72
Golf Course Acres	470.45	470.45	470.45
Support Site Acres	58.8	58.8	58.8
Total Acres	3,346	3,373.6	3,392.13

Sioux Falls Parks and Recreation Patrons	2019	2020*	2021
Midco® Aquatic Center (indoor)	204,692	93,006	188,418
Aquatics (outdoor)	182,156	0*	162,079
Athletic Events	975,904	17,044	820,402
U.S.S. South Dakota Battleship Memorial	8,632	0*	11,039
Falls Park Visitor Center	193,281	99,544	186,622
Great Bear Recreation Park	38,933	44,319	48,044
Great Plains Zoo & Museum	230,984	172,111	246,753
Levitt at the Falls	58,430	0**	66,148
Mary Jo Wagner Arboretum	18,252	1,746	1,929
Outdoor Campus	100,000***	100,000***	100,000***
Butterfly House Aquarium	86,190	48,230	87,162
Community Centers and Gyms	192,628	129,557	149,355
Park Shelter Usage	62,269	72,693	83,692
Playground Programs	9,021	5,257	4,311
Outdoor Skating Rinks	8,297	10,893	7,988
Sioux Falls Golf—Rounds of Play	84,408	97,351	104,525
Special Events in Parks	294,686	58,549	155,729
Weddings on Park Property	6,388	4,852	7,658
Total Attendance	2,755,151	955,152	2,431,854

*Covid-19

**Covid-19, performances were not held at the Levitt at the Falls

*** Estimate

The Recreation division of Sioux Falls Parks and Recreation provides recreational and educational programs and services as well as wellness programs aimed at enriching the lives of residents of Sioux Falls and surrounding communities of all ages and abilities.

The Recreation division promotes health and wellness for all ages and abilities through the facilities it operates and program opportunities.



Tot Lot	2017	2018	2019	2020*	2021
Attendance	1,244	1,814	1,531	0	1,384
Number of Locations	2	2	2	0	2

Summer Playground Program	2017	2018	2019	2020*	2021
Attendance	9,944	10,700	7,490	5,257	4,311
Number of Locations	15	15	15	25	12

Theater in the Parks	2017	2018	2019	2020*	2021
Attendance	2,634	3,369	2,109	0	2,037
Rain Dates	0	0	0	0	0
Performances	16	18	15	0	15

Storyland Children's Theatre	2017	2018	2019	2020*	2021
Attendance	21,588	14,785	12,695	4,181**	12,115
Rain Dates	1	2	7	0	1
Performances	31	31	24	16	31

Mondays at McKennan	2017	2018	2019	2020*	2021
Attendance	6,357	6,055	5,415	4,850	4,892
Rain Dates	1	0	0	0	1
Performances	8	8	8	7	7

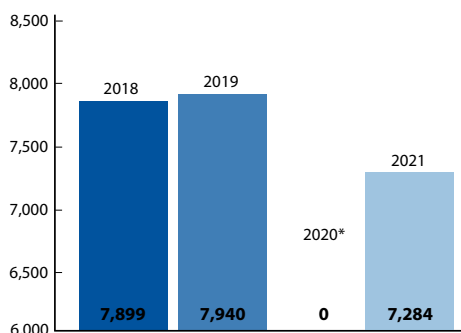
*Covid-19 **4 weeks—typically 8

Outdoor Swimming Lessons	2017	2018	2019	2020*	2021
Enrollment	1,546	1,444	1,335	0	1,316
Total Classes Available	170	170	170	0	170
Lesson Revenue	\$28,880	\$26,965	\$23,717	0	\$23,215

Indoor Swimming Lessons	2017	2018	2019	2020*	2021
Enrollment	1,685	1,739	1,452	383**	1,071
Total Classes Available	174	196	196	83**	196
Lesson Revenue	\$51,705	\$73,880	\$61,305	\$15,844**	\$58,153

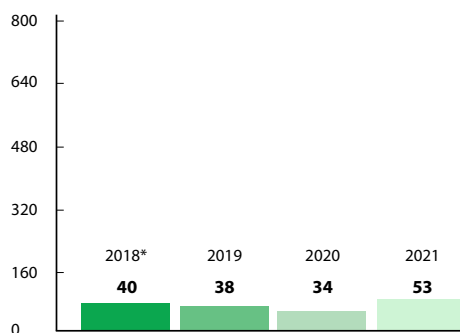
Pool Attendance	2017	2018	2019	2020*	2021
Midco® Aquatic Center	219,055	209,218	204,692	93,006	188,418
Drake Springs Family Aquatic Center	48,289	45,910	47,898	0	55,615
Frank Olson Pool	13,278	14,827	16,627	0	Closed
Kuehn Pool	26,668	37,553	25,942	0	18,921
Laurel Oak Family Aquatic Center	36,528	38,510	36,723	0	40,993
McKenna Wading Pool	18,001	19,509	14,223	0	Closed
Pioneer Spray Park	—	—	—	0	—
Terrace Park Family Aquatic Center	43,167	43,668	40,654	0	45,226
Total	404,986	409,195	386,759	93,006	350,497

Swim Pass Sales (By Year)



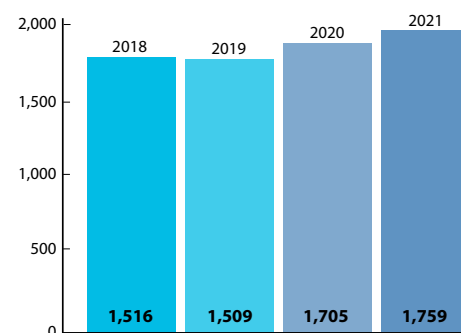
Summer Passes

*Covid-19



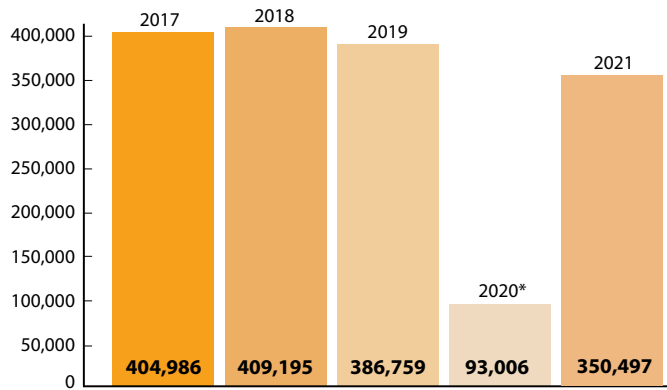
Fall/Winter/Spring Passes

*Pass structure change



Annual Passes

*Covid-19 ** Winter & Fall sessions only due to Covid-19.



Pool Attendance Totals Per Year

*Covid-19

9,096
Total Passes Sold (2021)



Athletic Partners Participants	2017	2018	2019	2020*	2021
Adult Soccer	660	811	811	626	480
Adult Softball	4,191	4,595	4,260	3,931	4,155
Amateur Baseball	50	50	50	0	0
Lacrosse	168	160	116	125	176
Rugby	—	400	400	0	25
Swim Teams	245	277	399	206	361
Tennis	1,484	1,165	1,114	1,125	1,496
Ultimate Frisbee	113	113	115	0	93
Youth Baseball	3,460	3,392	3,341	2,290	3,800
Youth Football	2,652	2,862	2,935	1,762	1,932
Youth Soccer	6,740	6,100	5,000	2,558	4,890
Youth Softball	3,896	3,640	3,709	1,655	2,954
Total Participants	23,659	23,565	22,250	14,278	23,625

Program participation only, does not include tournaments.

*Covid-19



Participants of Athletic Programs Offered by Parks and Recreation	2017	2018	2019	2020*	2021
Adult Basketball	1000	830	860	750	850
Adult Kickball	774	667	612	0	432
Adult Sand Volleyball	440	408	536	248	384
Adult Winter Volleyball	1,888	1,864	1,824	1,768	1,896
Track	2,082	1,318	2,211	0	1,414
Youth Triathlon	196	233	172	0	139
Total Participants	6,450	5,320	6,215	2,766	5,114

*Covid-19



Outdoor Ice Skating	2016/17	2017/18	2018/19	2019/20	2020/21
Total Skate Days	41	64.5	60	58	38

7,988
Ice Skating Attendance*

38
Number of Ice Skating Days

- ◆ 2 Outdoor Hockey Rinks
- ◆ 6 Outdoor Ice Skating Rinks

Rink Attendance	2016/17	2017/18	2018/19	2019/20	2020/21
Campus	870	1,070	849	957	424
Frank Olson	883	1,047	632	926	452
McKenna	1,346	1,507	1,238	1,755	1,225
Memorial*	3,473	4,520	2,010	3,654	2,375
Sherman*	1,279	1,629	1,269	1,802	550
Tuthill	3,000	3,100	2,299	2,756	2,962
Total	10,851	12,873	8,297	10,893	7,988

*Hockey Rink Location



Community Center & Enlarged Gym Attendance	2017	2018	2019	2020*	2021
Kenny Anderson Community Center	36,778	35,777	32,853	20,569	26,434
Kuehn Community Center	38,690	31,464	32,251	24,595	26,845
MariCar Community Center	31,187	28,799	23,935	16,240	20,485
Morningside Community Center	64,435	63,860	60,638	38,109	43,843
Oyate Community Center	26,957	27,621	26,624	17,043	18,324
Laura Wilder Enlarged Gym	5,680	5,793	5,602	4,285	3,606
Memorial Enlarged Gym Middle School**	2,032	2,024	2,195	1,669	1,615
Terry Redlin Enlarged Gym	4,005	4,484	4,477	3,625	4,884
Fred Assam Enlarged Gym	5,335	4,389	4,053	3,422	3,359
Total Attendance	215,099	204,220	192,628	129,557	149,355

*Covid-19

**Used Only for League Play

Top Special Events Based on Attendance

Sioux Falls Parks and Recreation plays a major role in the success of some of the city’s best known events. The department is primarily responsible for facility and park rentals, and assists event organizers in navigating the City’s special events application and permitting process. The public reserves Parks and Recreation facilities for family celebrations, sports activities, classes, corporate functions, and leisure activities.

A special event application is required for events or activities that are open to the public, held outdoors on public property, a city street, downtown, or in a city park. An application must be received no later than sixty (60) days before a proposed event. Our goal is to assist the event planners in coordinating the services needed from the City of Sioux Falls to ensure the event is safe and successful.

Citywide Special Events	2017	2018	2019	2020*	2021
Event Applications Processed	88	94	111	89	115
Estimated Attendance	306,840	276,845	294,686	58,549	155,729
Number of Parks Utilized as Host Site	68	72	86	26	75
Number of Days—Lighting of the Falls					32 days rented
Levitt Shell Rental Reservations					10

*Covid-19

Sioux Falls Parks and Recreation thanks the countless individuals and the many groups, organizations and businesses who support us in meeting our mission—to contribute time, talents, and resources to enhance City of Sioux Falls Parks and Recreation, programs, parks and facilities. Through the City’s values, we work hard to achieve the vision our citizens set for us, working in partnerships based on safety, teamwork, innovation, character and respect. The City of Sioux Falls has one of the best park systems in the country, and our volunteers are a big reason why. This is especially true of this past couple of years, saving the department over \$80,000 in labor costs in 2021 alone. Although the numbers are impressive, they do not fully represent what volunteers help us accomplish. Volunteers play an important role in helping us stay connected to the community and the people we serve. We value the skills, input, and passion volunteers bring to Sioux Falls Parks and Recreation, and consider ourselves lucky to work with such amazing people.

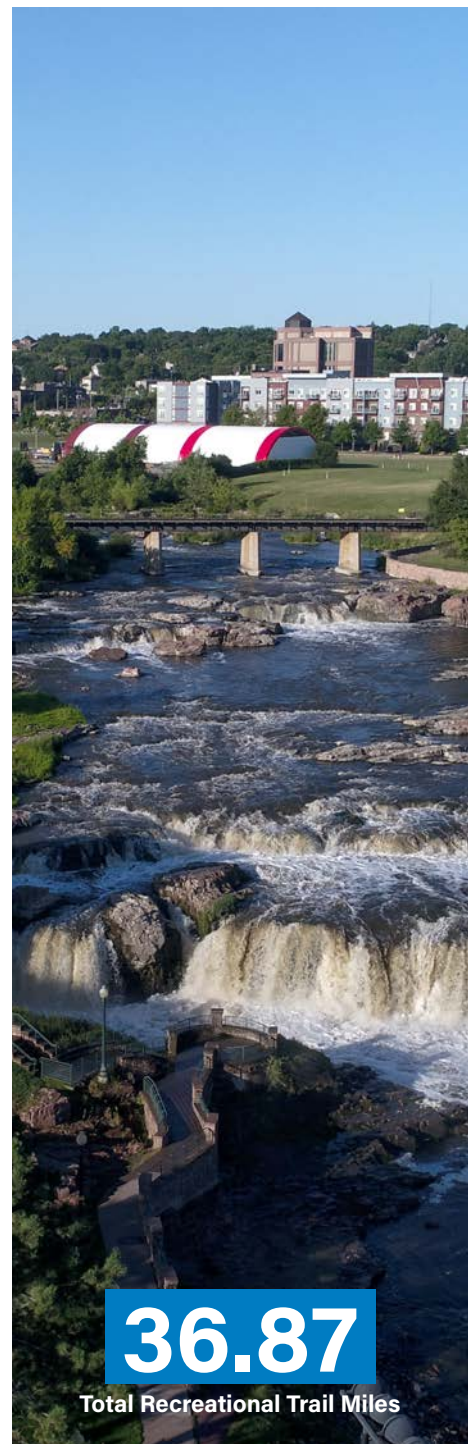


Volunteers	2019	2020*	2021
Number of Volunteers	1,207	514	1,901
Number of Volunteer Hours	2,821.00	779.25	3,746
Volunteer \$ Value	\$58,400.61	\$16,598.23	\$80,268.88

*Covid-19

Greenway Recreation Trail Main Loop	Section Miles
Falls Park to Tenth Street	.89
Tenth Street to Cliff Avenue Bridge at 13th Street	.63
Cliff Avenue Bridge to 18th Street Bridge	.93
18th Street Bridge to 26th Street	.68
26th Street to Cliff Avenue Bridge to Minnesota Avenue Bridge	1.87
Cliff Avenue Bridge to Minnesota Avenue Bridge	1.31
Minnesota Avenue Bridge to Western Avenue Bridge	1.26
Western Avenue Bridge to 41st Street Bridge	1.36
41st Street Bridge to Golf Course Bridge	1.42
Golf Course Bridge to 12th Street	.70
12th Street to Madison Avenue	1.05
Madison Avenue to Russell Street	.50
Russell Street to Maple Street Bridge	.49
Maple Street Bridge to Minnesota Avenue	3.15
Minnesota Avenue to Falls Park	2.89
Total Main Trail Loop Miles	19.13

Paved Trails	
Main Loop	19.13
Falls Park to Lien Park	1.25
Beadle Greenway	1.30
Pasley Park Entrance to 49th Street	1.54
Diamond Creek Trail Spur	0.50
57th Street to RR Bridge	0.43
Oxbow Greenway	0.43
Dunham / Legacy Spur (west bank)	4.80
Cherry Creek Trail Corridor (Skunk Creek)	1.25
Veteran Parkway Trail	4.22
Total Spur Miles	34.85



36.87

Total Recreational Trail Miles

Park Access Points

Sherman Park Trail Access	0.31	Riverdale Park Trail Access	0.39
Elment Trailhead Access	0.30	26th Street Trail Access	0.05
Elmwood Park Trail Access	0.10	Pasley Park Trail Access	0.05
10th Street Trail Access	0.19	Spencer Park Trail Access	0.21
Cherry Rock Trail Access	0.11	Tomar Park Trail Access	0.22
18th Street Trail Access	0.09	Subtotal (Miles)	2.02

Outdoor Basketball Courts	No.
Bakker Park	1
Beadle Greenway Park	1
Bryant Park	1
Dan Dugan Park	1
Dunham Park	1
Emerson Park	1
Fred Dawley Park	1
Galway Park	0.5
Glenview Park	1
Granite Valley Park	0.5
Hayward Park	2
Heritage Park	1
Jefferson Park	0.5
Kenny Anderson Park	2
Kuehn Park	2
Lacey Park	1
Laurel Oaks Park	2
Lewis Park	1
Linwood Park	1
Lion's Centennial Park	1
Marion Park	1
McKenna Park	0.5
Meldrum Park	1
Memorial Park	1
Menlo	0.5
Morningside Park	1.5
Pioneer Park	1
Platinum Valley Park	2
Prairie Meadows Park	2
Prairie Trail Park	1
Riverdale Park	1
Southern Vistas Park	2
Spellerberg Park	0.5
Terrace Park	1.5
Thelin Park	1
Tomar Park	1
Town One Park	1
Whispering Woods South Park	2
Whittier Park	0.5
Willow Ridge Park	2
Total	46.5

Indoor Basketball Courts	No.
Fred Assam Enlarged Gym	2
Kenny Anderson Community Center	2
Kuehn Community Center	2
Laura Wilder Enlarged Gym	2
MariCar Community Center	2
Morningside Community Center	2
Oyate Community Center	2
Terry Redlin Enlarged Gym	2
Total	18

Indoor Volleyball Courts	No.
Fred Assam Enlarged Gym	3
Kenny Anderson Community Center	3
Kuehn Community Center	3
Laura Wilder Enlarged Gym	3
MariCar Community Center	3
Memorial Middle School	3
Morningside Community Center	3
Oyate Community Center	3
Terry Redlin Enlarged Gym	3
Total	29

Pickleball Courts	No.
Riverdale Park	6

Tennis Courts	No.	Type
Frank Olson Park	3	Asphalt
Kuehn Park	8	Concrete
Laurel Oak Park	10*	Concrete
Lewis Park	2	Concrete
McKenna Park	8	Concrete
Menlo Park	2	Asphalt
Pioneer Park	1	Concrete
Spellerberg Park	2	Concrete
Terrace Park	2	Concrete
Tomar Park	2	Concrete
Total	40	

*2 Regulation Courts/8 Quick Start Courts

Sand Volleyball Courts	No.	Type
Cherry Rock Park	4	League/Picnic
Dunham Park	1	Picnic
Elmwood Park	1	Picnic
Kuehn Park	1	Picnic
Lewis Park	1	Picnic
Riverdale Park	4*	League/Picnic
Spencer Park	2	Picnic
Spellerberg Park	1	Picnic
Terrace Park	2	Picnic
Tomar Park	1	Picnic
Total	18	

*6 Pickleball Courts are also available.

Softball Fields	No.	Age	Type
Burnside Park	3	Youth/Adult	Slow-Pitch
Dunham Park	20	Youth	Fast-Pitch
Frank Olson Park	11	Youth	Fast-Pitch
Harmodon Park	8	Adult	Slow-Pitch
Jefferson Park	1	Youth	Fast-Pitch/Slow-Pitch
Kenny Anderson Park	4	Adult	Slow-Pitch
Kuehn Park	2	Youth/Adult	Slow-Pitch
McCarty Park	10	Youth	Slow-Pitch
Morningside Park	2	Youth	Fast-Pitch
Sherman Park	9	Adult	Fast-Pitch/Slow-Pitch
St. Lambert Fields	2	Youth	Fast-Pitch
Total	70		

Soccer Fields	No.	Age
Farm Field	1	Youth/Adult
Lion's Centennial Park	12	Youth
Kenny Anderson Park	2	Youth/Adult
Memorial Park	2	Youth/Adult
Sherman Park	1	Youth/Adult
Spencer Park	12	Youth
Tomar Park	10	Youth/Adult
Yankton Trail Park	21	Youth/Adult
Total	61	

*All soccer fields can accommodate Spring and Fall league play.

Multi-Use Sports Fields	No.
Sanford Sports Complex	10
Riverdale	4
Total	14

Baseball Fields	No.	Age
Cherry Rock Park	2	Youth
Elmwood Park	6	Youth
Harmodon Park	7	Youth/Adult
Pasley Park	7	Youth
Terrace Park	9	Youth
Kuehn Park	2	Youth
Total	35	



Other City Property Maintenance



Other City Property consists of City Owned Lots, Right-of Way areas, Drainage Ways and Detention ponds. The combined acreage of these 679 separate locations is around 1,864 acres. All of these locations are throughout the 75 plus square miles of the City of Sioux Falls. Maintenance consists of mowing up to a 12-foot buffer where accessible once every 7 to 10 days and multiple spot sprayings for noxious weeds throughout the growing season. In the fall, they do a complete spraying of the property as weather allows on each location. This crew is a custom to gaining new properties each year and on average they will receive around 20-30 acres.

City crews also maintain all landscaped medians within the city which currently stands at over 26 miles. This consists of around 29 plus acres of turf grass and 8 plus acres of landscaped planting beds. These landscaped beds have well over 20,000 different varieties of plants and shrubs. Maintenance consists of mowing all 149 locations twice a week during the growing season along with plant, shrub and tree care year round. 89 of these locations have an irrigation system and crews monitor these systems to make sure they are running as programmed and are consistently looking for ways to help reduce maintenance costs and un-needed water consumption. As the city grows and streets are re-done landscaped medians have become more and more popular with the citizens of Sioux Falls.

Forestry Report	2017	2018	2019	2020	2021
Removal of Diseased/Dead Trees—Street Trees	338	316	233	141	129
Removal of Diseased/Dead Trees—Private Trees	168	121	125	179	275
EAB Ash Tree Removal from Parks	—	530	458	550	425
EAB Street Tree Removals	—	—	1,947	2,523	2,349
Permits Issued for the Removal of Street Trees	39	50	41	42	88
Emergency Tree Removals	57	52	29	78	136
Arborist Licenses—City Licensing Program	38	60	65	78	75

Park Plantings	2017	2018	2019	2020	2021
Trees and Shrubs Planted	181 in 18 parks	201 in 17 parks	197 in 17 parks	522 in 36 parks	430 in 20 parks
Annual Flowers Planted	19,000	23,800	20,670	5,764	15,415
Perennial Flowers Planted	765	6,400	859	1,339	1,208

Nuisance Trees	2017	2018	2019	2020	2021
Complaints	200	126	168	172	185
In Violation	179	120	139	136	168
Trimmed by City	12	4	9	7	21

Sioux Falls Golf

In January 2018, the City of Sioux Falls partnered with Landscapes Golf Management to operate the three public City courses that include Elmwood, Prairie Green, and Kuehn Park. The fourth season of the five-year agreement (2021) proved to be challenging while still dealing with a pandemic, yet fruitful as new and old players fill the courses daily. The city courses saw major growth in season passes, rounds played, and customer satisfaction ratings. Players took part in new events such as Fast 5 Under the Lights, A Night on the East 9, and new city champions were crowned, something certainly to be proud of.

Elmwood is the only 27-hole golf course in Sioux Falls and received a multi-million-dollar renovation in 2018 to give this historic course a more modern look. In 2022, Golf Week Magazine named Prairie Green the second best public course in the state (3rd in 2021). Kuehn Park is the area's only public executive course featuring a fast and fun par 30 track that is perfect for all skill levels. Sioux Falls Golf also provides year-round activities by hosting nearly 80 group outings, hundreds of lessons, numerous fun events, and around 50 banquet parties throughout the year. This is your city and these are your courses. For more information, visit Siouxfallsgolf.com.



Great Plains Zoo & Delbridge Museum of Natural History

The Great Plains Zoo & Delbridge Museum of Natural History is owned and operated through a partnership between the City of Sioux Falls and the Zoological Society of Sioux Falls (ZSSF). The City of Sioux Falls owns the infrastructure, land, and all assets associated with the Zoo and Museum and maintains the grounds in and around the facility.

ZSSF operates the Zoo which includes animal care & wellness, animal habitats, education programming and maintains the grounds within the exhibit. ZSSF is a nonprofit 501c3 organization dedicated to furthering the mission of the Zoo and its development.

The Great Plains Zoo is accredited by the Association of Zoos & Aquariums (AZA) and features over 600 animals representing 127 species. The 45-acre park offers a quality zoo experience fostering appreciation for the natural world while also offering fun activities including our Savannah Express Train and Sanford Family Carousel. Come and see our recently renovated Brown Bear exhibit, award winning Snow Monkey habitat, or visit our Rare Rhinos exhibit featuring the endangered Black Rhinoceros and learn how Great Plains Zoo works with conservation efforts in Namibia to save this amazing animal from extinction. The Zoo also includes the Delbridge Museum of Natural History, a one-in-the-world collection of 150 mounted animals including 38 "vanishing species." To learn more about the Great Plains Zoo & Delbridge Museum of Natural History, visit greatzoo.org.



Great Bear Recreation

Great Bear offers more than 220 acres of unlimited year-round fun and excitement just minutes away from downtown Sioux Falls, SD. As the largest park in the Sioux Falls Parks & Recreation Department, Great Bear features winter sports activities for the whole family. The park is home to 14 downhill trails, a terrain park, the Kirby Family Tubing Park, and cross country and snow shoeing trails that provide fun and excitement for all skill levels. During the summer months, Great Bear provides the perfect setting for hiking, jogging, bird watching or enjoying a picnic on our 4-mile trail system. Our location also provides the perfect setting for outdoor weddings, corporate retreats, family reunions and other private parties. Stop out today and experience one of South Dakota's top natural attractions.



Falls Overlook Cafe

The quartzite building still standing on the east bank is the Sioux Falls Light and Power Company building, completed in 1908. The building housed three 500-kilowatt hydroelectric generators and used the dam and the millrace from the Queen Bee Mill.

In subsequent years, the plant added additional coal-fired steam generators. The plant was abandoned in 1974 and donated to the City in 1977. Before remodeling took place to create the Falls Overlook Café, the building was in similar condition as when it was first constructed.

The Falls Overlook Café serves a variety of family-friendly foods, farm-fresh ice cream, beverages and snacks. Reservations are available for private events, which can be booked year round. Guests can enjoy dining inside and outside with a view of the falls.

Historic exhibits are displayed inside the building. In addition, the Café has other Sioux Falls and South Dakota merchandise available for purchase. Other special events are scheduled throughout the year, including wine-tasting dinners, Winter Wonderland kick-off celebration and live music events throughout the Spring-Fall season. The Falls Overlook Café opened in 2005 and is operated under a management agreement between the City of Sioux Falls and Stensland Enterprises, Inc.



Levitt at the Falls

Levitt at the Falls is part of a national network of outdoor Levitt music venues and concert sites dedicated to strengthening the social fabric of communities in America through free, live music in public spaces. The Levitt Shell Sioux Falls is a professional outdoor music venue located downtown in Falls Park West. It opened in 2019, fostered by a three-way partnership between the National Mortimer & Mimi Levitt Foundation, the local Levitt at the Falls non-profit, and the City of Sioux Falls. Presenting high-caliber talent and a broad array of music genres and cultural programming, Levitt venues are welcoming, inclusive destinations where families, friends and neighbors of all ages and backgrounds come together. In 2021, the Levitt returned to the lawn with a season of 40 free concerts, serving over 67,000 audience members with live music through concerts and Levitt In Your Neighborhood community outreach. An additional 283,000 community members experienced music online or on TV through Levitt In Your Living Room programming. In 2022, Levitt at the Falls will host a full season of 50 free concerts. To learn more about Levitt at the Falls, visit levittsiouxfalls.org.



ADMINISTRATION SUMMARY FOR 2021

Parks and Recreation (which includes park operations, recreation programming, park development, and administration) has 79 full-time employees.

Park Operations includes park maintenance, forestry, other City properties maintenance, and central services. Light mechanical repairs to equipment, scheduling of specialized maintenance equipment, distribution of supplies, and carpentry work are all functions completed by this team. Forestry crews perform tree trimming and removal throughout the park system, and enforce the street tree ordinance and non-parkland management, including downtown trees, boulevards, and drainage ways. The city is divided into four park districts, each having a District Supervisor who is accompanied by Park Caretakers (assigned as crew leaders) and Park Technicians who assist with daily maintenance of the neighborhood and community parks located within their district boundary. Park Operations also includes a GeoData Specialist focused on geographic data project support. Park Operations are supported by six other report-to-work locations (remote park shops) across the park system.

Recreation Division oversees the Midco® Aquatic Center, five community centers, six ice rinks, five outdoor pools, one wading pool, three enlarged gyms, athletic programs, leagues, classes, programs, camps, fitness opportunities, theater, and concerts. The division consists of a Recreation Manager, four Recreation Program Coordinators, and five Recreation Program Specialists.

In addition, an Administrative Manager supervises a Recreation Program Coordinator responsible for volunteers, community outreach and citywide special events.

The Parks and Recreation administration office, at 231 North Dakota Avenue, is the headquarters for park operations, park planning, administration, and recreation division personnel.

ADMINISTRATION HIGHLIGHTS FOR 2021

The following cyclic programs were updated to help in planning for future capital projects and maintenance:

- Completed replacement of the Great Bear ski lift and the associated site improvements
- Completed construction of Phase 1 of the Cherry Creek Trail (12th street to Songbird)
- Completed construction of the new school park site at 41st & Sparta (Majestic Meadows)
- Completed cyclic repairs and replacements of existing park assets throughout the park system—including improvements to bike trails, roadways, parking lots, and various park elements
- Conducted and selected a winner of the Falls Park Design Competition
- Completed design of the Hayward Park Improvements Project—splash pad, playground, walking loop, dog park (2022 construction)
- Completed Conditional Letter of Map Revision (CLOMR) and continued design for Phase 3 of the DT River Greenway
- Kicked off design of the Jacobson Plaza project—City's first ever outdoor refrigerated ice skating experience
- 2022-2026 CIP was approved by Park Board and City council
- Continued land acquisition for new parks and trails (BSR Trail Corridor & Tomar Park Expansion)
- Completed gifting agreements for various park development projects including:
 - Tomar Park—Sioux Falls Tennis Association
 - Nelson Park—Sioux Falls Skatepark Association
 - Hayward Park—Leadership SF and Promising Futures
 - Jacobson Plaza—Garry Jacobson
 - Sertoma Park—Noon Sertoma Club
 - Veterans' Memorial Park—Gold Star Monument

SPONSORSHIPS

- **Children's Dental/Parkway Orthodontics**—Allows Children's Dental Center/Parkway Orthodontics to permanent advertising in the Recreation Pool area at the Midco® Aquatic Center through 2026.

PARTNERSHIP AGREEMENTS

- **Sertoma Club MOU**—A memorandum of understanding between the City of Sioux Falls and the Sertoma Club regarding a future gift of "all inclusive" playground equipment to be located at Sertoma Park.
- **Gold Star Monument MOU**—A memorandum of understanding between the City of Sioux Falls and the Woody Williams Foundation for a future gift of a Gold Star Monument to be located at Veterans' Memorial Park.
- **Nelson Park Skateboard MOU**—A memorandum of understanding between the City of Sioux Falls and the Sioux Falls Skatepark Association for a future cash gift for the design and construction of a skatepark to be located at Nelson Park.
- **SD Junior Football Scoreboard (SDJRFB) Advertising Agreement**—Allows SDJRFB to sell advertising on the scoreboards at Sanford Sports Complex to raise funding to support youth programs.
- **Midco® Aquatic Center Concessions Agreement**—Stensland Enterprises provides everything from fruit, ice cream and beverages to chicken strips and pizza to patrons of the Midco® Aquatic Center. Stensland's provides catering services for swim meets as well as private events such as birthday parties and meetings.

GIFTING AGREEMENTS

- **Jacobson Plaza Conditional Gifting & Naming Agreement**—Cash gift for the design and redevelopment of the undeveloped portion of Falls Park West into a year round destination introducing new experiences to the Sioux Falls Parks & Recreation (SFPR). New experiences to include a refrigerated ice skating ribbon and an all-inclusive playground. In addition, perpetual naming of the space as the “Jacobson Plaza at Falls Park”.
- **SD Junior Football Gifting Agreement**—Gift of an insulated heating unit to be located within the Junior Football Building at Sanford Sports Complex.
- **Hayward Park Gifting Agreement**—Monetary gift up to \$200,000 from the Sioux Falls Area Community Foundation (SFACF) to provide for the redevelopment of a portion of Hayward Park into a spray park, new playground equipment and other amenities depicted in SFPR Master Plan.
- **Tuthill House Gifting Agreement**—Tuthill House Neighborhood Association gifts house renovations which includes a new roof, siding, windows, doors, gutters and downspouts, interior finishes, and hardscaping to the Tuthill House located within Tuthill Park.
- **Sioux Falls Tennis Association Donation (SFTA)**—Tomar Park Tennis Complex—SFTA agrees to gift to the City ten additional outdoor tennis courts adjacent to the two existing outdoor tennis courts for a total of 12 outdoor courts, lighting for 12 courts, fencing, court surface improvements, nets, poles. Landscaping, and associated tennis complex improvements to be located at Tomar Park.

USAGE/LEASE AGREEMENTS

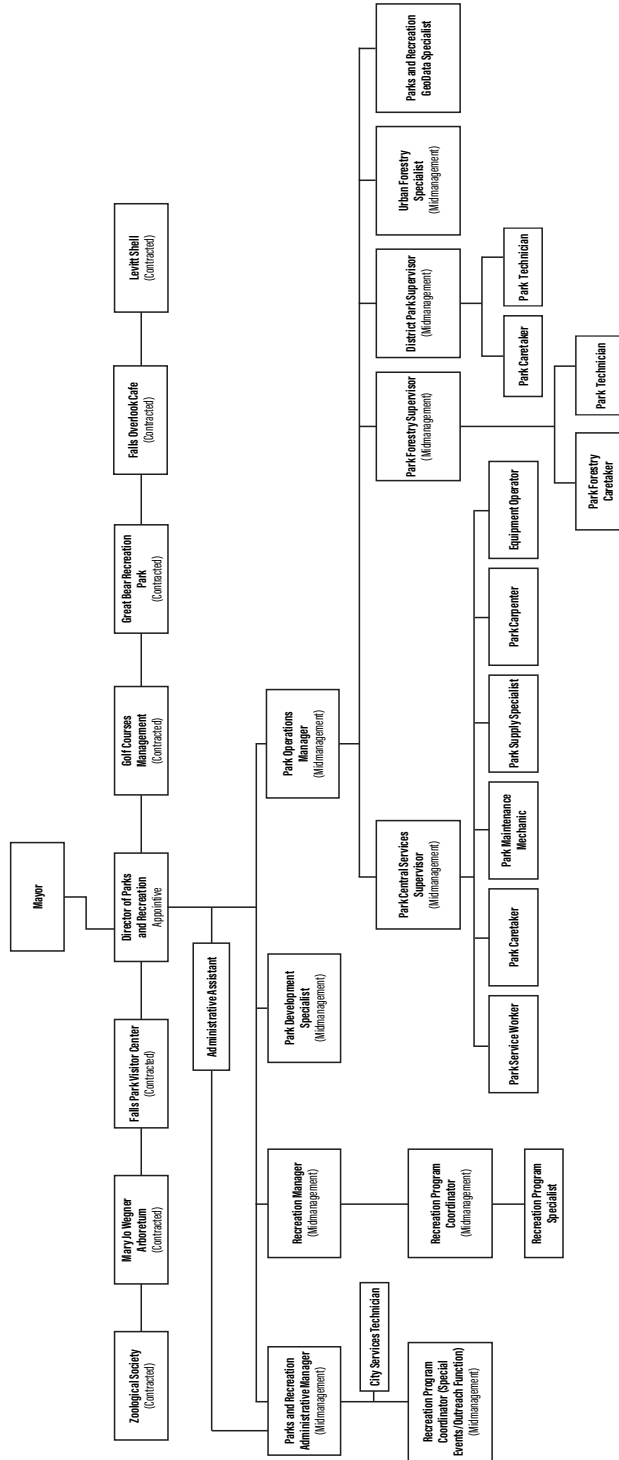
- **Horsebarn Lease**—Stockyards Plaza, Inc. exercised option to extend the lease of the horse barn facilities within Falls Park through 2024. The Stockyard Ag Experience uses the horsebarn facility to tell the story of agriculture on the prairie and educate younger generations about agriculture through interactive, multimedia learning stations, events, and seminars.
- **Falls Area Single Track (FAST)**—Allows FAST nonexclusive use of parts of Yankton Trail Park, Tuthill Park, Dunham Park, Legacy Park, Leaders Park, and Great Bear Recreation Park (future), to establish and maintain single track facilities for use by the general public.

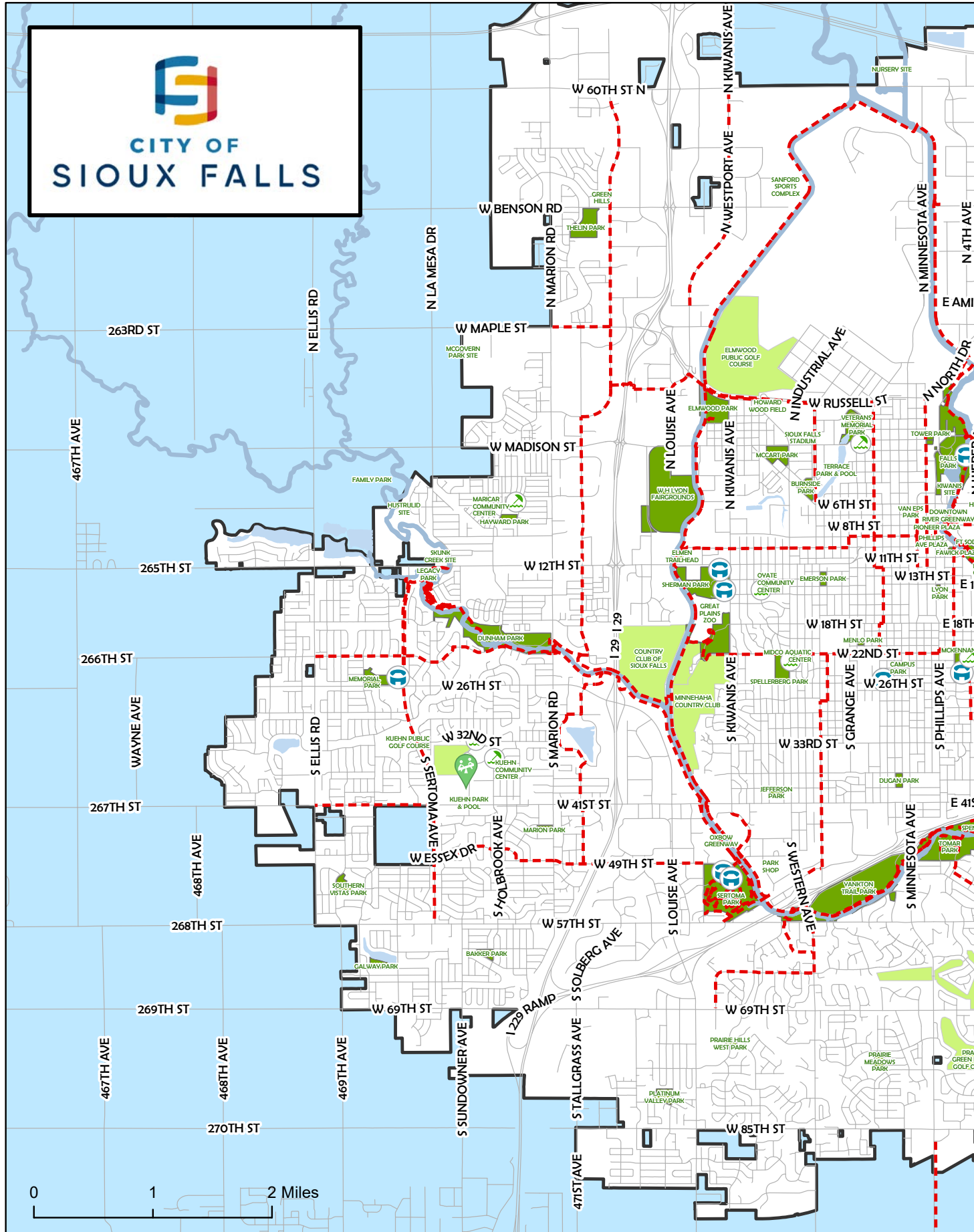
MANAGEMENT AGREEMENTS

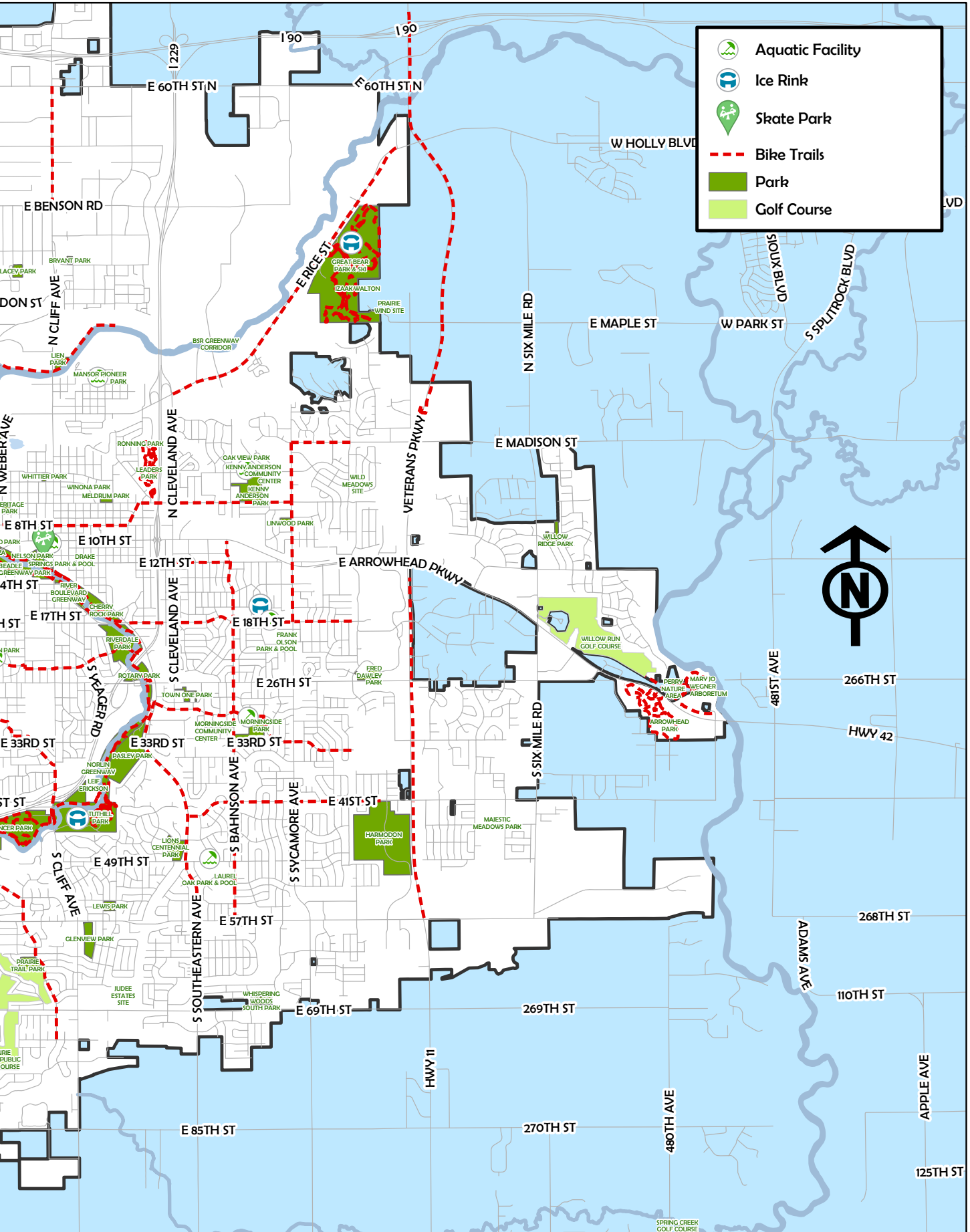
- **Mary Jo Wegner Arboretum**—A new three year agreement was negotiated with the Wegner Arboretum Society, allowing the Society to manage the overall operation and functions of the Mary Jo Wegner Arboretum through 2024. The Society raises private funding for capital projects and provides visitor services and programming while the City of Sioux Falls provides utilities and maintains buildings and grounds.
- **Great Plains Zoo**—The Zoological Society of Sioux Falls exercised an option to extend the management of the Great Plains Zoo and Delbridge Museum through 2026. The Society raises private funding for capital projects and provides visitor services, animal management, and maintains areas inside of exhibits while the city maintains building and grounds and contributes an annual subsidy to support operations of the society.
- **Falls Park Visitor Center**—An agreement was negotiated with The Greater Sioux Falls Chamber of Commerce to allow the CVB (Experience Sioux Falls) to manage and operate the Visitor Center at Falls Park. The CVB provides visitor services while the City of Sioux Falls provides select utility services and maintains buildings and grounds.



City of Sioux Falls—Parks and Recreation







-  Aquatic Facility
-  Ice Rink
-  Skate Park
-  Bike Trails
-  Park
-  Golf Course



