

# LEGEND

- ① RECREATION COURT
- ② NATURE TRAIL (RECYCLED ASPHALT)
- ③ SEATING /VIEWING AREA WITH OVERHEAD STRUCTURE, BENCH SEATING AND INFORMATIONAL SIGNAGE
- ④ TRAIL HEAD WITH PARK ENTRANCE AND INFORMATIONAL SIGNAGE
- ⑤ BERMED AREA WITH PLANTINGS
- ⑥ FORMAL GRASS AREA (12.5 ACRES)
- ⑦ CONSERVATION EASEMENT / WETLAND AREA (23 ACRES)
- ⑧ BOARDWALK WETLAND PRESERVE CROSSING
- ⑨ PARK ENTRANCE ROAD
- ⑩ WEST NEIGHBORHOOD PEDESTRIAN CONNECTION
- ⑪ OPEN SPORTS GRASS AREA APPROXIMATELY (5 ACRES)
- ⑫ TRAIL HEAD FOR WETLAND PRESERVATION AREA WITH BENCH SEATING AND INFORMATIONAL SIGNAGE
- ⑬ TRAIL FORK WITH DIRECTIONAL SIGNAGE
- ⑭ EXISTING UPLAND SEEDING MIX

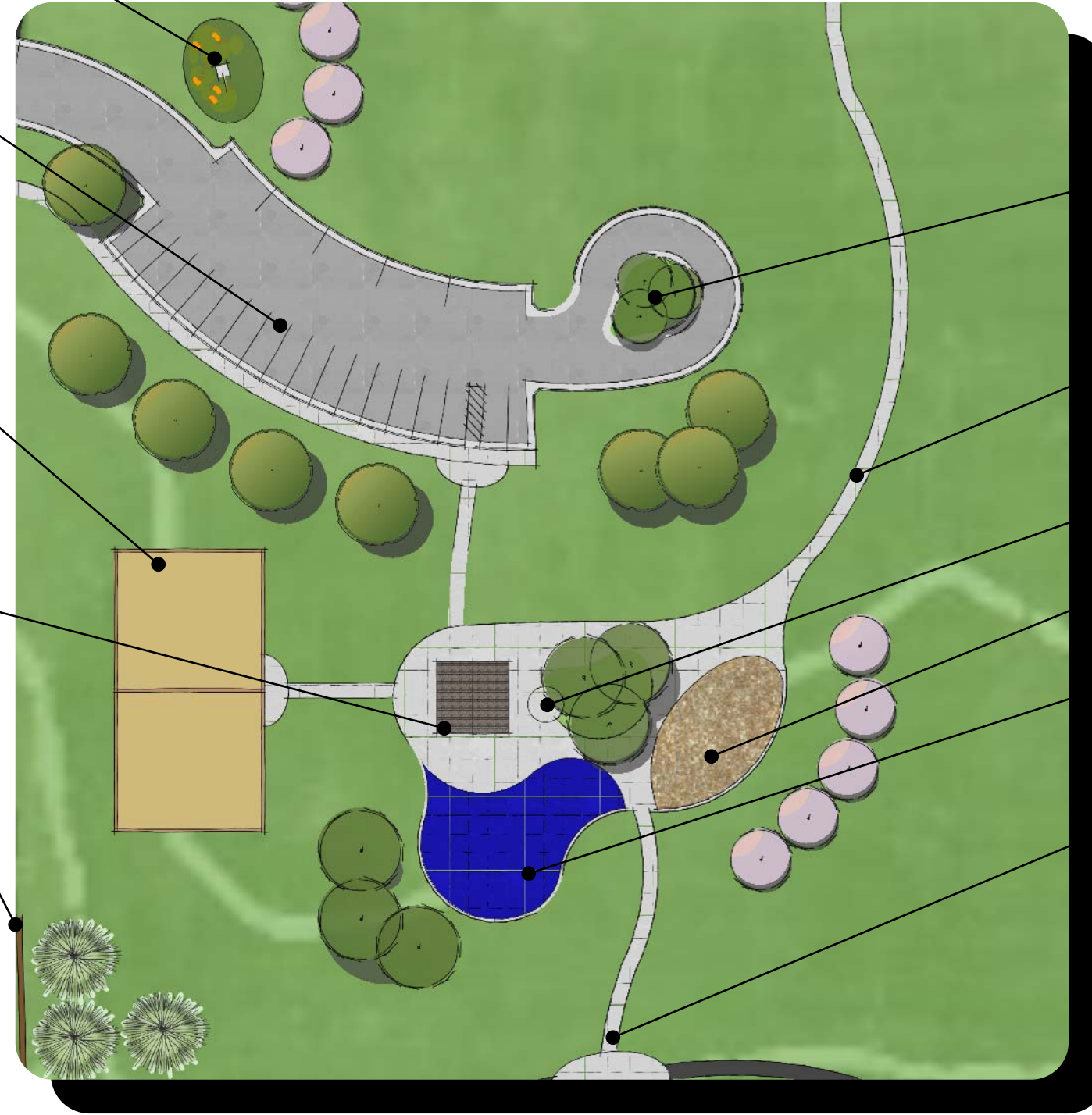
PRIMARY PARK SIGNAGE WITH LANDSCAPING

23 STALL PARKING LOT

RECREATION COURT

WOOD PICNIC SHELTER

BROKEN SPLIT RAIL FENCE



PLANTED ISLAND

CONNECTIVE PATHWAY TO NORTH NEIGHBORHOOD

DRINKING FOUNTAIN

SWINGS

PLAY SYSTEM WITH SOFTPILE

CONNECTIVE PATHWAY TO WETLAND CONSERVATION AREA

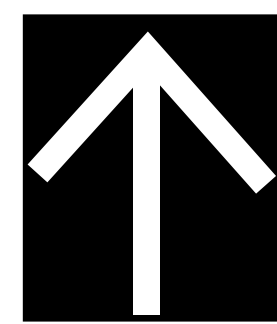
## RECREATION AREA DETAIL

SCALE: 1" = 50'



## RECREATION AREA PERSPECTIVE

NO SCALE



# JUDEE ESTATES

SCALE: 1" = 120'  
NOVEMBER 4, 2008

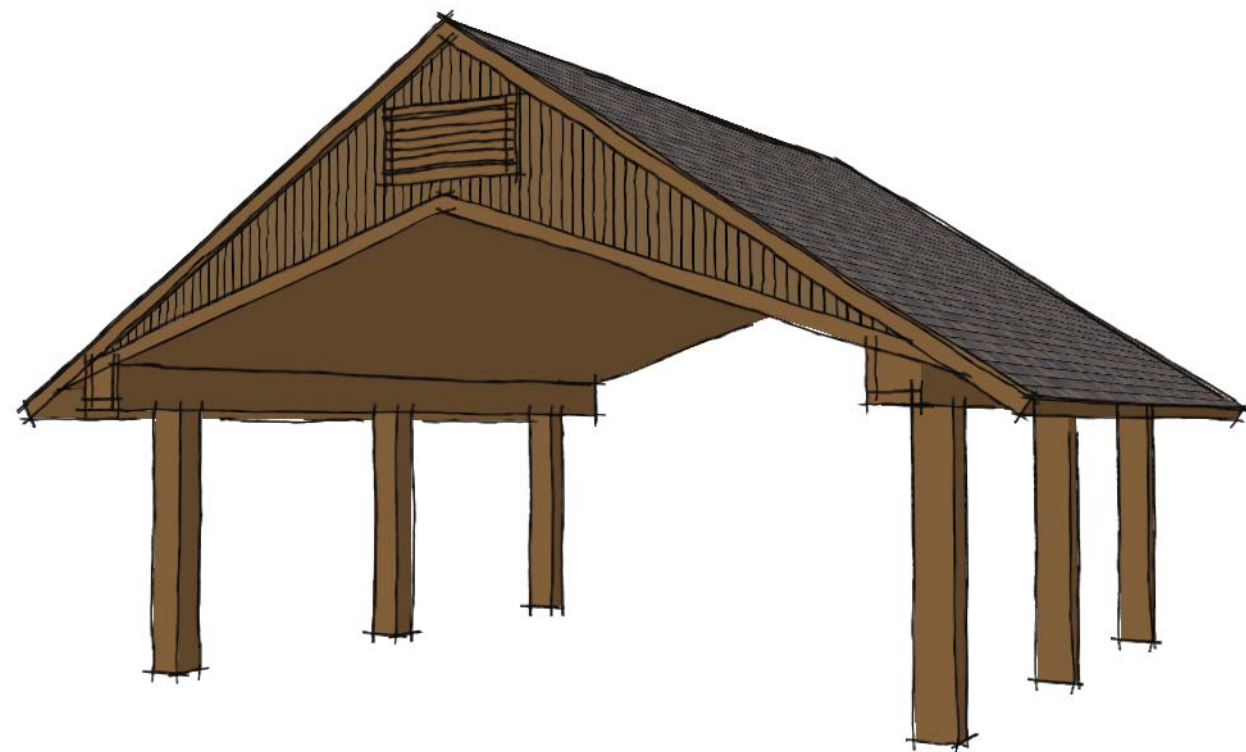
MASTERPLAN





**RECREATION AREA**

- PICNIC SHELTER
- DRINKING FOUNTAIN
- PLAY SYSTEM
- RECREATION COURT
- SWING SET

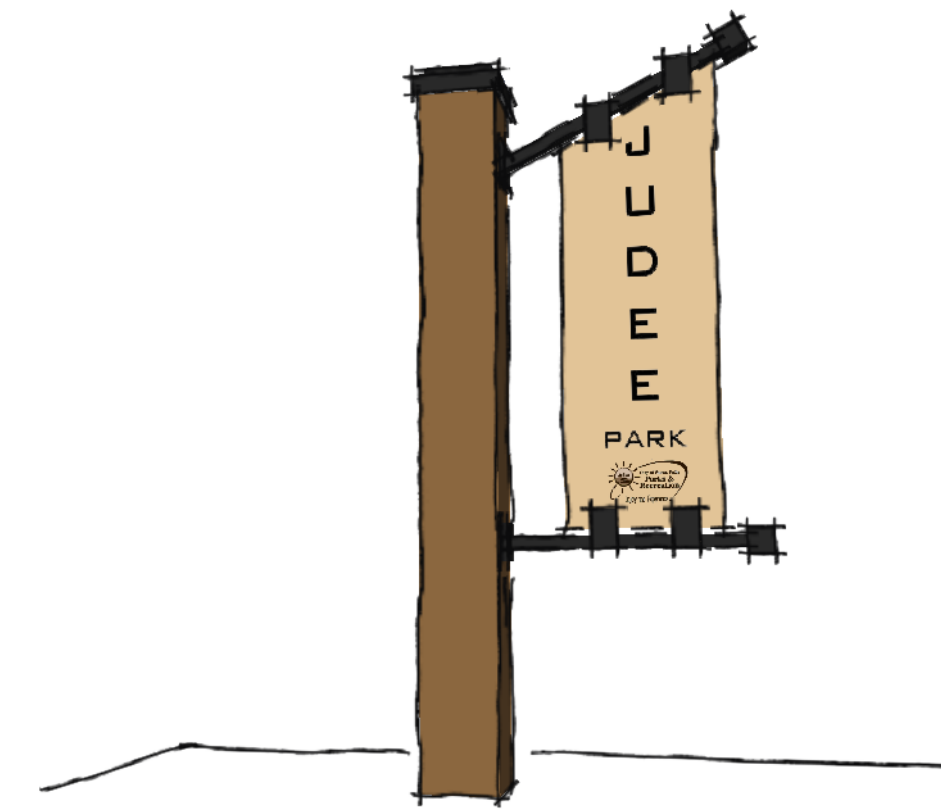


**PICNIC SHELTER**

- SHINGLED ROOF
- SCISSORS TRUSS SYSTEM
- CEDAR CONSTRUCTION



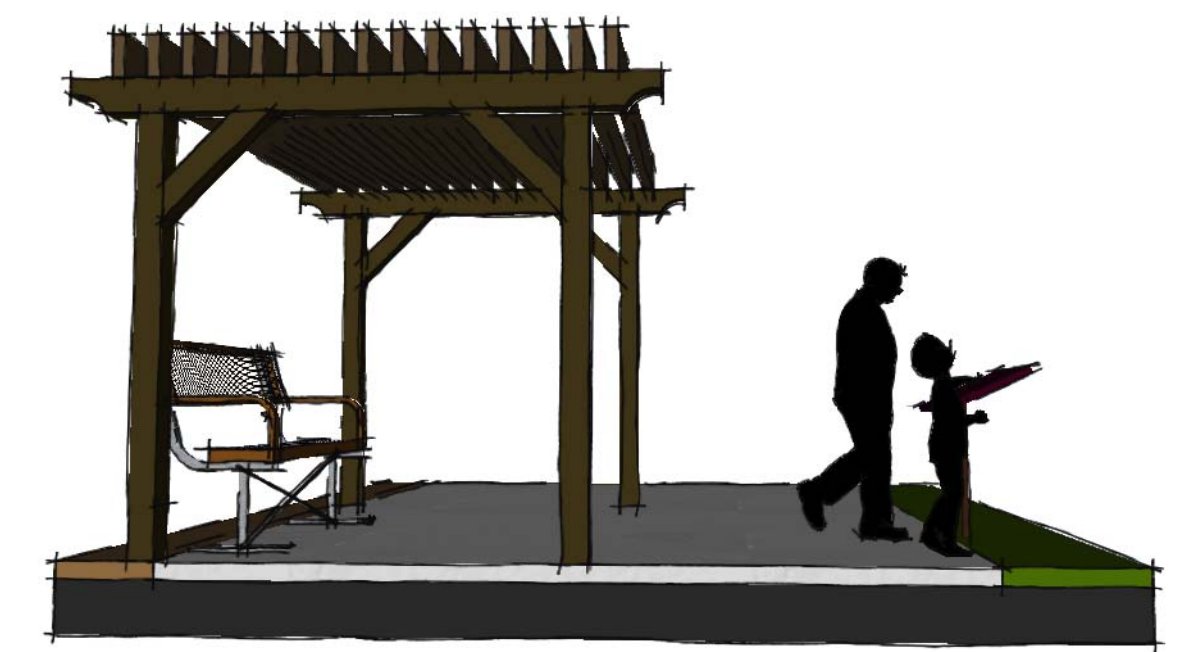
**WETLAND PRESERVE  
CROSSING**



**PRIMARY PARK SIGN**

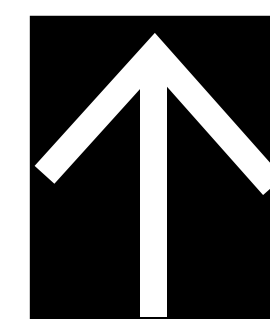


**PLAYGROUND**



**SEATING AREA**

- OVERHEAD STRUCTURE
- BENCH SEATING
- INFORMATIONAL SIGNAGE



NOVEMBER 4, 2008

**JUDEE ESTATES**

**CONCEPT DETAILS**