

R.F. Pettigrew Neighborhood History

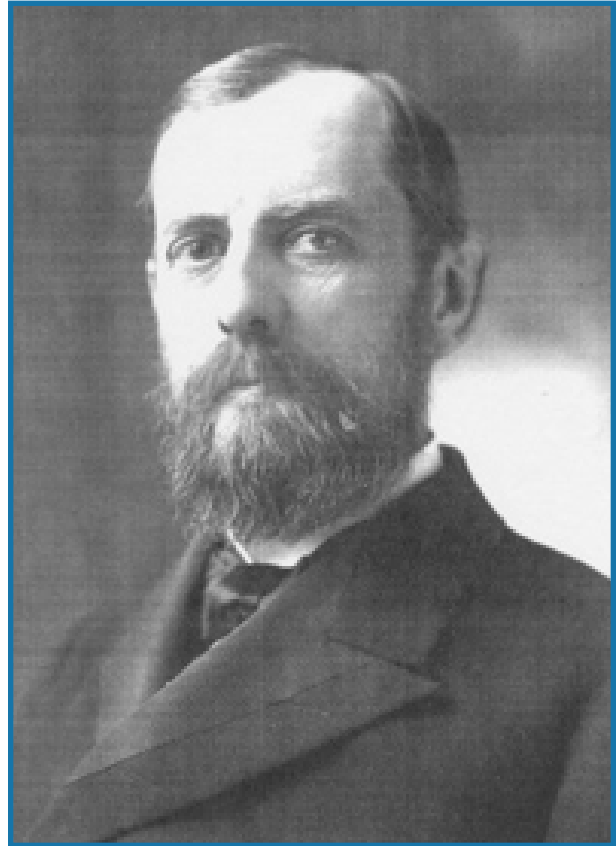
R.F. Pettigrew, most commonly recognized as South Dakota's first full-term U.S. Senator, was a very active participant in the development of the neighborhood.

Platting and selling the residential lots in his own addition (Prairie-Grange), he also purchased land that had been platted by Russel Bennett and sold lots to new arrivals. A good portion of the neighborhood was developed (Ninth–12th and Grange–Minnesota) by Pettigrew, who made a good portion of his fortune in real estate speculation.

Grigsby's Addition (Summit–Minnesota, 12th–16th) is also within the neighborhood. Melvin Grigsby partnered for a short time with Pettigrew. Grigsby's child was the first white child born in Sioux Falls,

R.F. Pettigrew also was a member of the first school board in Sioux Falls in 1873.

Pettigrew's house at 131 North Duluth Avenue has become the Pettigrew Home and Museum to tell the story of Pettigrew and of the area.



R.F. Pettigrew