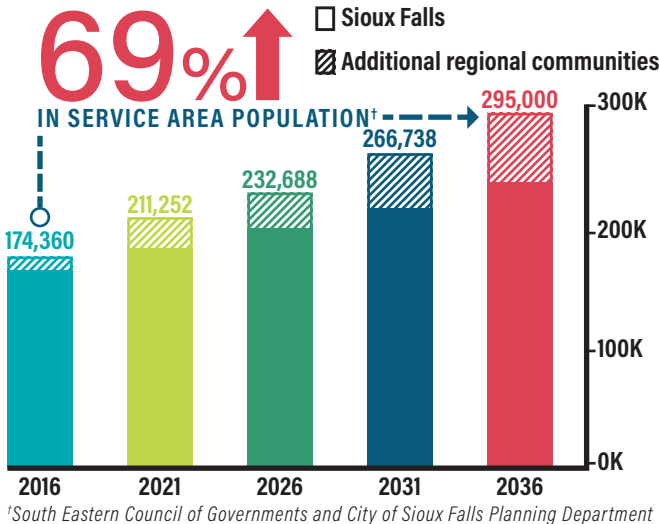
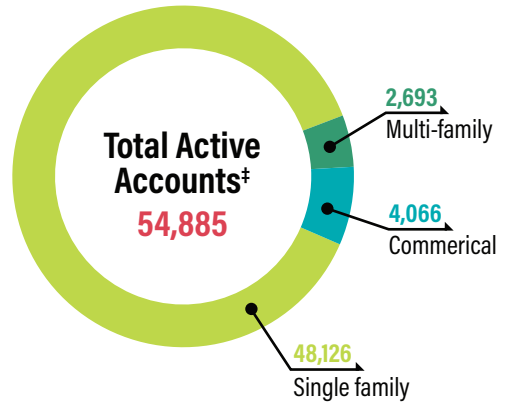


WATER RECLAMATION FACILITY IMPROVEMENTS



ACTIVE UTILITY ACCOUNTS



120,640

projected population increase anticipated by 2036

\$100 MILLION

projected collection system investment

\$160 MILLION

projected treatment plant expansion & investment

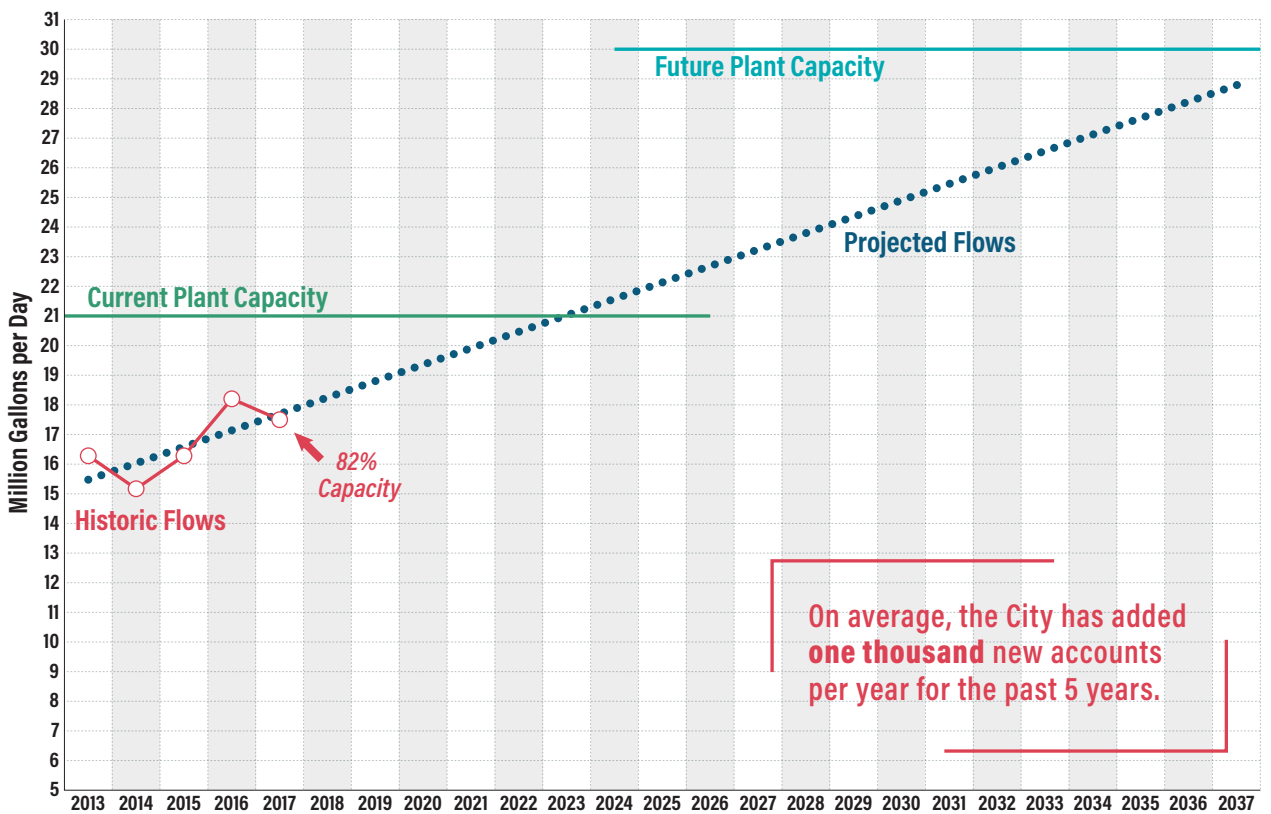
21 MGD*

current treatment plant capacity

30.1 MGD*

future treatment plant capacity

WASTEWATER ANNUAL AVERAGE DAILY FLOW



The 2009 projected population of the City of Sioux Falls deviated from the 2010 Census population of the city by only 1/4 of 1%.

1986

FINAL PHASE OF TREATMENT FACILITY COMPLETED | Rated Capacity = 13.4 MGD*

2003-2017

WATER CONSERVATION PROGRAM IMPLEMENTED |
• 4.5 billion gallons of water saved.
• Treated 1 million gallons less per day in 2017 than in 2003 with a population increase of 48,600.

2009

CAPACITY STUDY RESULTS ACCEPTED BY SD DENR | Re-rated capacity = 21 MGD*

2025

FUTURE PROJECTED CAPACITY | 30.1 MGD*

*million gallons per day